

T H E N E W 2 0 1 9
J E E P C H E R O K E E



Jeep®

THE REIMAGINED JEEP® CHEROKEE

ENVISION ALL THAT AWAITS

TAKE THE WORLD WITH YOU WHEN YOU SET OUT FOR
DISCOVERY IN THE NEW JEEP® CHEROKEE. HEAD-TURNING STYLE MATCHED
WITH NEW TECHNOLOGIES AND PROVEN CAPABILITY HELP MAKE TRAVELS
ULTRA-COMFORTABLE AND EXCEPTIONALLY REWARDING. BRING MORE TO
YOUR DAY, EVERYWHERE YOU GO, WHEN YOU HAVE
THE REIMAGINED CHEROKEE LEADING THE WAY.



WORLD-CLASS
INTERIOR
CRAFTSMANSHIP

BEST-IN-CLASS
4x4 CAPABILITY^{1*}

BEST-IN-CLASS
ALL-WEATHER
CAPABILITY²

BEST-IN-CLASS
TOWING³

*All disclaimers and disclosures can be found on back cover

LIMITED SHOWN IN BILLET SILVER METALLIC

PURPOSEFULLY REDESIGNED

SHINE BRIGHT Jeep Cherokee faces the world with renewed style and brilliance. A fresh face features a sleek take on the revered Jeep Brand seven-slot grille. Stunning new LED headlamps, daytime running lamps, taillamps and available fog lamps are representative of all the innovations and enhancements found in the leader of Canada's Best-Selling 4x4 SUV brand.⁴



LIMITED SHOWN IN VELVET RED PEARL



OVERLAND® SHOWN IN BRIGHT WHITE



QUALITY VERIFIED STITCH BY STITCH

TOP OF THE LINE With the reimagined 2019 Jeep® Cherokee interior, the focus is on presenting a fit and finish crafted with elegance and assembled with laser-like precision. Quality enhancements are found throughout. The long list of standard features offered on every trim is impressive, and those who are most discerning will appreciate the exclusive available options.

ACOUSTICALLY SOUND The ride is smooth and hushed, keeping the distractions of traffic noise and wind interference in the outer world where they belong. It's accomplished with the help of an available acoustic windshield and front-door glass, included in the available Premium Insulation Group. This is first-class travel at its very best.



SPECIAL TREATMENT IS AVAILABLE

Accent stitching on the available leather-trimmed interior adds an elevated touch of class. Available Piano Black bezel treatments border vents, knobs and screens. From the leather-trimmed shifter to Integrated Voice Command⁵ hands-free communication with Bluetooth[®] to four USB chargers to help power up all of your devices, this available interior raises your standard of living.

FREEDOM HAS NO BOUNDARIES



ALL-NEW 2.0L I-4 TURBO ENGINE

WITH ENGINE STOP/START (ESS) TECHNOLOGY

This All-New available engine performs with V6 muscle, yet sips fuel as an I-4 should. Direct injection boosts power while reducing emissions, and ESS technology helps improve fuel economy. It's a perfect match of superior strength teamed up with welcome efficiencies. With its standard match to the enhanced 9-speed transmission, you'll enjoy strong takeoffs and smooth highway coasting.

270
HORSEPOWER

295 lb-ft
OF TORQUE

7.6 L/100 km*
HIGHWAY

780-km
FUEL-TANK RANGE†

*See back cover for full details.†Based on manufacturer's testing. Actual results may vary.

LIMITED SHOWN IN GRANITE CRYSTAL METALLIC



A BRILLIANT PERFORMANCE

2.4L TIGERSHARK® MULTIAIR® I-4 ENGINE WITH ENGINE STOP/START (ESS) TECHNOLOGY It burns lean and clean, delivering a quiet and refined ride. This standard Tigershark® engine delivers an impressive fuel economy rating of 7.6 L/100 km highway*. Acclaimed for its unique and proficient valve-lift system, the 2.4L Tigershark incorporates a column of oil that helps deliver precise control of intake valve events. From its fully isolated, aluminum head cover with an integrated oil separation system to its high-pressure, die-cast aluminum block, the Tigershark engine is designed to impress.



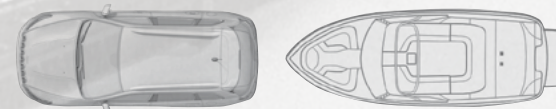
3.2L PENTASTAR™ VARIABLE VALVE TIMING (VVT) V6 WITH ESS TECHNOLOGY This available workhorse runs quiet and smooth, with its integrated exhaust manifold, plus high-compression-ratio pistons. Spirited drivers will appreciate its 271 hp, 239 lb-ft of torque and fuel efficiency rating of 8.2 L/100 km highway*.



ESS TECHNOLOGY Its job is to help reduce CO₂ emissions and improve efficiency by using a dual-battery system and sophisticated controls to reduce fuel flow and turn off the engine when the vehicle brakes to a stop. When the brake is released, the engine seamlessly restarts and the transmission engages. This technology is virtually undetectable and will not affect performance.

SEGMENT-FIRST 9-SPEED AUTOMATIC TRANSMISSION⁶ From its quick launch to its smooth highway travel, you'll notice your ride remains calm and smooth. This confident performance occurs when each shift responds at the right time, for each of the nine gearshifts. Thus, you experience a level of luxury unique to its class. A distinctive set of four overdrive ratios helps gain efficiencies while reducing overall noise and vibration. Economies are maximized and performance is optimal at all times. You're finely attuned to nearly any driving demand, both on- and off-road.

BEST-IN-CLASS TOWING³ LETS YOU BRING MORE FUN You'll enjoy towing capability of up to 2,041 kg (4,500 lb) when your Cherokee is equipped with the available 3.2L Pentastar™ V6 engine and the available Trailer Tow Group.



VIRTUALLY NOTHING STOPS JEEP® BRAND 4x4 SYSTEMS

Choose your own path to master every road.

This is where the four-wheel-drive movement began and now culminates to deliver true on- and off-road capability as only an originator can. Your quest for 4x4 freedom is supported by a disconnecting rear axle that lets every 4WD system seamlessly transition in and out of four-wheel drive at any speed, adding a welcome gain in efficiency.

SELEC-TERRAIN® TRACTION MANAGEMENT SYSTEM

This masterful system helps match your capability to the road ahead.

The Jeep® Selec-Terrain® Traction Management System adds ultimate driving stability to every Cherokee equipped with an authentic four-wheel-drive system. Selec-Terrain coordinates 12 vehicle systems, including throttle control, transmission shifting, transfer case, traction control and Electronic Stability Control (ESC)†. Choose from up to five sure-footed modes: Auto, Snow, Sport, Sand/Mud and, exclusive to Trailhawk® models, Rock.



AUTO

When turned to this mode, Selec-Terrain does all the work, automatically adjusting vehicle dynamics to best suit the road to help ensure optimal efficiency. The rear driveline disengages when not needed.



SNOW

Adjusts for ultimate performance over snow- and ice-covered roads by maximizing vehicle stability and minimizing oversteer. Major systems auto-engaged and managed in this mode include antilock brakes and traction control.



ROCK

Delivers Trail Rated® 4WD Low capability thanks to its rear-differential locking element, allowing you to crawl over rugged terrain at appropriately safe speeds. Exclusively on Trailhawk.



SAND/MUD

Maximizes low-speed traction by allowing additional wheel-slip via specifically tuned chassis controls, differentials and transmission ratios.



SPORT

Feel like having a little more fun on winding country roads? Select this mode and you're automatically tuned to handle a more aggressive driving style.



BADGE OF HONOUR

Trail Rated® vehicles represent the ultimate in off-road capability. Every Cherokee Trailhawk® wears the Trail Rated badge, indicating it has successfully passed tests in five performance categories: Traction, Ground Clearance, Manoeuvrability, Articulation and Water Fording⁹



Jeep

JEEP® ACTIVE DRIVE I This fully automatic, single-speed power transfer unit (PTU) delivers seamless operation in and out of 4WD at any speed. Equipped with a rear-axle disconnect, you can go from four-wheel drive to two-wheel drive, and back again, without driver input. This results in reduced energy loss when 4WD capability is not required, which can improve fuel efficiency. It all comes together to deliver a consistent boost in all-weather capability, resulting in the kind of on- and off-road confidence the Jeep® Brand is known for.

JEEP ACTIVE DRIVE II Experience Jeep Brand adventure and the strength to tow, climb steep hills or travel off-road. Exceptional torque management and 4-Low mode are delivered via a two-speed PTU. This locks the front and rear driveshafts for additional power at low speeds or for towing your toys. Hitch Cherokee to your RV and take it along for the ride, thanks to a driveline neutral switch. Enjoy enhanced off-road capability with a 2.5-cm (1-in.) increase in ride height and an incredible crawl ratio of 51.2:1 when paired with the 2.0L I-4 Turbo engine, and a ratio of 48:1 when paired with the available 3.2L Pentastar™ Variable Valve Timing (VVT) V6 engine.

TRAIL RATED® JEEP ACTIVE DRIVE LOCK

Your quest for ultimate freedom is answered with this Trail Rated 4WD system, giving you the capability to become the master of virtually every road, trail and highway. It includes everything in Jeep Active Drive II, plus a locking rear differential that provides even more capability and strength for severe off-road conditions. You'll also have help maintaining steady slow speeds on all surfaces with Selec-Speed™ Control. Standard on all Jeep Cherokee Trailhawk models.

4



4



Properly secure all cargo.

HANDS-FREE POWER LIFTGATE

How often are your hands full when you're on the go, taking care of all of your daily tasks? This new convenience feature opens your rear liftgate while you keep hold of your grocery bags. Simply swipe your foot below the rear bumper to release the liftgate so it can gently open. Set your bags inside the rear cargo area, and decide where you're going next — after you swipe close the cargo door. Available.



CAPLESS FUEL FILLER

It's attractive as well as functional. You'll keep your hand sanitizer, too. A safe and faster way to refuel. Standard.

CONVENIENCE FEATURES



MORE STORAGE AND USB CHARGERS

Conveniently store all your phones, computers, tablets and gaming devices. With an array of compartments, cup holders and pockets situated throughout the cabin, Cherokee helps keep you organized. Plus, with multiple USB ports and 12-volt auxiliary outlets, everyone can keep devices charged and ready to go. Standard.



TIRE-FILL NOTIFICATION

Now Cherokee provides visual and audible assistance when airing up your tires. Lights and turn signals will flash while filling tires, and when the required PSI is reached the horn will honk one time. If the tire gets overfilled, Cherokee gives a multi-honk warning. Standard.



REMARKABLY ACCOMMODATING



PEOPLE, CARGO OR BOTH

The configurable 60/40 split-folding rear seats give you plenty of options. Rear passengers can adjust them to their liking, reclining up to six degrees. An available option allows rear passengers to move them fore and aft for the perfect amount of legroom. Flip down one or both of the split seats to accommodate people along with their gear of choice. Standard.



STORAGE PLUS

Fold the second-row seats forward to create more “bring-along room” than ever before. With multiple cup holders, cubbies and storage areas, you’ll be able to stash all kinds of devices and goods when you’re on the go. Standard.

TALK, AND CHEROKEE
WILL RESPOND

Use voice commands⁵ with your connected smartphone to create and send texts, make and receive calls, access directions and play music. Available.



SiriusXM TRAVEL LINK⁹

RAIN, GO AWAY

Weather radar and emergency alerts give you an instant snapshot of conditions with SiriusXM Travel Link.⁹ Current conditions and five-day forecasts help you follow the sun. Five-year trial subscription included. Available.



SiriusXM TRAFFIC⁹

FIND THE QUICKEST WAY
OUT OF TOWN

With SiriusXM Traffic,⁹ you get details on current traffic speed, accidents, construction and road closures on your built-in Uconnect[®] Navigation system. Five-year trial subscription included. Available.



SiriusXM⁹

TUNE IN TO ROCK, TALK,
NEWS AND SPORTS SHOWS

Choose from over 120 music, news, sports and specialty channels, and save favourite artists and songs. All included in your one-year trial subscription. Available.



Uconnect[®] + GUARDIAN¹² SiriusXM¹²

Drive worry-free with SiriusXM Guardian¹² — a premium suite of safety and convenience features that can be accessed in-vehicle or through the Uconnect App. Includes a one-year trial subscription. Available.

SIRIUSXM GUARDIAN¹² SERVICES

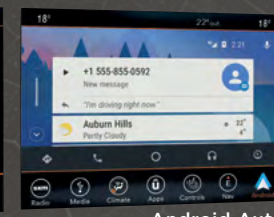
- Theft Alarm Notification
- Stolen Vehicle Assistance
- Remote Vehicle Start
- Remote Door Lock/Unlock
- Remote Horn and Lights
- Send & GoTM
- Vehicle Finder



Uconnect[®]



Apple CarPlay



Android Auto



LARGEST-IN-CLASS 8.4-INCH TOUCHSCREEN¹⁰

The next wave of award-winning personalization and connectivity has arrived, with available features like Siri[®] Eyes Free¹¹ voice commands⁵, "Do Not Disturb" that routes incoming calls and texts, and the Drag and Drop menu bar that allows you to display your top Uconnect[®] features and services. Convenience is matched with peace of mind, leading you to make the most of your time on the road, while remaining safe and secure.



SMARTPHONE Take mobile connectivity to the next level and seamlessly link your iPhone® or your Android™ phone to your compatible Uconnect system. Apple CarPlay¹³ lets you play music and stay in touch using your iPhone functions and apps via your vehicle's touchscreen. Android Auto™¹³ is designed to minimize distractions by connecting your Android phone to a simplified interface that's cast onto the Uconnect system's touchscreen. Available.



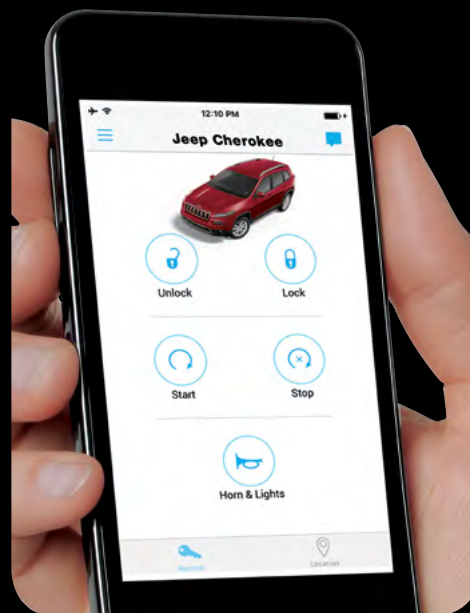
androidauto¹³

EMERGENCY HELP In the event of an incident, push the SOS Call¹² button. You'll be connected to a SiriusXM Guardian¹² agent who contacts 9-1-1, provides your location and stays on the line with you until help arrives. The Roadside Assistance Call¹² button puts you in touch with an agent who can get you help while you're out on the road. Both safety features are available with SiriusXM Guardian¹².

ENTERTAINMENT Listen to your favourite playlist from your connected device, then flip to SiriusXM satellite radio⁹ and enjoy the best commercial-free music, plus every major sport, and the biggest names in entertainment, news and comedy. You'll get over 120 channels, all at the press of a button. Available.

UCONNECT® APP FEATURES SIRIUSXM GUARDIAN SERVICES¹²

- **LOCK OR UNLOCK YOUR CAR** from virtually anywhere
- **START YOUR CAR** and cancel start remotely
- **FLASH THE LIGHTS** and sound the horn to help find your car
- Locate your car on a map using **VEHICLE FINDER**
- Send destinations to your navigation system using **SEND & GO**
- Receive alerts with **THEFT ALARM NOTIFICATION**
- Includes **STOLEN VEHICLE ASSISTANCE**



Trips are enhanced with informative and entertaining apps. Access them on your Cherokee touchscreen as well as your smartphone. Connected technology keeps you linked to a whole new world.

SAFELY STRETCH YOUR BOUNDARIES



PARKVIEW® REAR BACK-UP CAMERA¹⁴ Now you can park and back out with confidence. The standard system displays a rearview video image with dynamic distance grid lines when the vehicle is in Reverse. During parking and other similar manoeuvres, this system helps bring previously hidden rear objects to your attention on-screen.



PARK-SENSE® REAR PARK ASSIST SYSTEM¹⁴ Works in tandem with ParkView® Rear Back-Up Camera¹⁴ to detect the presence of objects, bringing them to your attention on screen and with an audible warning so you have time to react. Available.



PARALLEL AND PERPENDICULAR PARK ASSIST¹⁴ Through a network of available sensing elements on the front and rear fascias, the Jeep® Cherokee can help you in your daily manoeuvres and guide you into parking spaces. Parallel Parking Assistance¹⁴ is available on either side of the vehicle and can start searching for a suitable parking spot as soon as the driver activates the system using a dedicated button on the centre stack. Perpendicular Parking Assistance¹⁴ allows the vehicle to back itself into a suitable space. The system automatically controls steering-wheel angle, while the driver controls gear selection, brake and accelerator.



TRAILER SWAY CONTROL (TSC) Crosswinds or traffic hold no sway over you and your payload. As part of Electronic Stability Control (ESC)⁷, TSC monitors the vehicle's movement relative to the driver's intended path, applies alternating brake pressure to slow the vehicle, then increases the pressure on one front wheel to counteract the sway induced by the trailer.



RAIN-SENSING WINDSHIELD WIPERS Available sensors detect moisture on the windshield and automatically activate the wipers.



KEYLESS ENTER 'N GO™ WITH PROXIMITY ENTRY AND PUSH-BUTTON START No need to fumble for your keys. Available convenient technology detects your approach when you are carrying the key fob and will unlock the door when you pull the handle. Once inside, start the engine by pressing the Start/Stop button while stepping on the brake.



ELECTRONIC STABILITY CONTROL (ESC)⁷ A vehicle-wide network of safety sensors helps maintain vehicle control, providing instant aid should they detect you're veering off your intended path. ESC⁷ coordinates Electronic Roll Mitigation (ERM), Antilock Brake System (ABS), Brake Assist, All-Speed Traction Control and Trailer Sway Control (TSC), sending them into action when needed.



OVER 80 STANDARD AND AVAILABLE SAFETY AND SECURITY FEATURES



LANE DEPARTURE WARNING (LDW) WITH LANE KEEP ASSIST¹⁴ A forward-mounted camera can detect and measure the vehicle's position within a lane. If the available feature detects the vehicle is drifting out of its lane without you using the indicators, it can warn you visually and through a haptic warning — a “shiver” in the steering wheel. If you do not respond to the warnings, Lane Keep Assist¹⁴ can help gently nudge the vehicle back into the lane by leveraging the Electric Power Steering system to apply corrective steering input.



FORWARD COLLISION WARNING (FCW) WITH ACTIVE BRAKING¹⁴ Using radar and video sensors, this available system detects whether the vehicle is too rapidly approaching another vehicle or large obstacle in its path. When an object is detected, the system will provide audible and visual warnings and can assist the driver in avoiding the incident by actively applying the brakes. The driver has the ability to adjust the sensitivity, and turn brake support on or off.



ADAPTIVE CRUISE CONTROL WITH STOP AND GO (ACC STOP)¹⁴ This available system uses radar and video sensors to automatically adjust your cruising speed based on a preset speed and vehicle distance setting. In certain conditions, such as stop-and-go traffic, the system is able to bring the vehicle to a complete stop without any driver intervention, then prompt the driver to press the Resume button or tap the accelerator to re-engage to a safe-range speed.

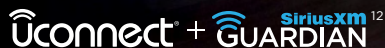


BLIND-SPOT MONITORING (BSM)¹⁴ WITH REAR CROSS-PATH DETECTION¹⁴ When driving forward, the available BSM¹⁴ system continually monitors the vehicle's side blind zones using dual radar sensors. When a side blind spot is encroached, you're notified via an illuminated icon on the appropriate sideview mirror, but if the turn signal is active, an audible notification sounds. You can use your radio to program this chime or audible alert.



VEHICLE SENSORS AND REAR

BACK-UP CAMERAS¹⁴ These features help keep you and your passengers safe while you're in motion. These available, advanced systems are programmed to keep you informed with audible as well as visual notifications.



Drive worry-free with available SiriusXM Guardian¹² — a premium suite of safety and convenience features that can be accessed in-vehicle or through the Uconnect® App. With SiriusXM Guardian¹² Services Uconnect App you can stay connected to your Cherokee from virtually anywhere you go.



BLIND-SPOT MONITORING (BSM)¹⁴
WITH REAR CROSS-PATH DETECTION¹⁴

ADAPTIVE CRUISE CONTROL WITH STOP AND GO (ACC STOP)¹⁴



OVERLAND® INTERIOR SHOWN IN BLACK

THE EXCEPTIONAL LUXURY OF CHEROKEE OVERLAND®

YOU'VE ARRIVED With Jeep® Cherokee Overland, you're in possession of the very best. You'll enjoy highly crafted appointments and details inside and out, and a smooth and hushed ride, thanks to an acoustic windshield and front-door glass. Premium and utterly soft Nappa leather trim covers nearly all touchable surfaces, and heated front and rear seats with cooling ventilation provide additional comfort.

ROBUST TECHNOLOGY The Uconnect® 4C NAV multimedia centre with the Largest-in-Class 8.4-inch touchscreen¹⁰ comes standard with SiriusXM Guardian¹² Traffic⁹ and Travel Link⁸, and includes GPS navigation¹⁵ and Voice Command⁵ for safe, hands-free operation. The Alpine® Premium Sound System features nine speakers, plus a subwoofer, all optimally placed throughout the cabin.

SAFETY AND CONVENIENCE The standard new hands-free power liftgate opens with a swipe of your foot beneath the rear bumper, making it easier to carry groceries and load them into your cargo area. Dazzling new 19-inch aluminum wheels and chrome tow hooks are eye-catching standard features. Add the available Trailer Tow Group to bring along more fun.

Active safety and security features are standard, including Blind-Spot Monitoring (BSM)¹⁴ with Rear Cross-Path Detection¹⁴ and the Park-Sense® Rear Park Assist System¹⁴ plus you can opt for the available Adaptive Cruise Control with Stop and Go (ACC STOP)¹⁴ Forward Collision Warning (FCW) with Active Braking¹⁴ and Lane Departure Warning (LDW) with Lane Keep Assist¹⁴. These welcome guardians constantly monitor your drive, alerting you to potential hazards, as needed. All of these features come together to create Cherokee Overland, an SUV designed to delight and impress.



THE WORLD
COMES WITH IT

OVERLAND® SHOWN IN DIAMOND BLACK CRYSTAL

CUSTOMIZABLE 7-INCH IN-CLUSTER DISPLAY CENTRE Controls on the steering wheel can instantly scroll you through a selection of vehicle data displayed within your instrument panel on an available 7-inch colour screen, including:

NAVIGATION¹⁵ Turn-by-turn directions are displayed front and centre, for safe viewing. **VEHICLE INFO** Real-time data shows your vehicle's performance vitals, including engine temperature and fluid levels. **VEHICLE DYNAMICS** Are your tires properly inflated? How fast are you going? **VEHICLE ALERTS** You'll receive visual notification for safety systems. **FUEL CONSUMPTION** View real-time data regarding efficiencies and when it's time to refuel.

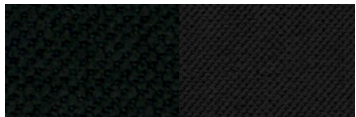


PREMIUM AUDIO SYSTEM Audiophiles can choose the available premium 9-speaker Cherokee sound system with an 8-inch subwoofer, designed in tandem with Alpine®, the leading manufacturer of high-performance mobile electronics. The system's 11 channels pump sound by way of 506 watts of power for a dynamic soundfest to inspire your music-filled travels.

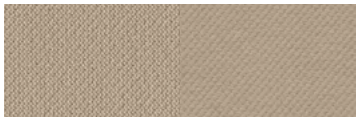
KEYLESS ENTER 'N GO™ This available feature allows you to keep your key fob in your pocket or purse, leaving your hands free to quickly open the door, take a seat, push a button and head out for fun.



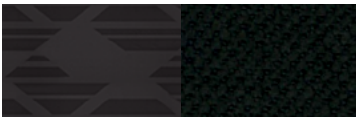
FABRIC, PAINT* AND WHEEL OPTIONS



Cloth – Black with Storm Blue
accent stitching
Standard on Sport



Cloth – Light Frost with Copperhead
accent stitching
Standard on Sport



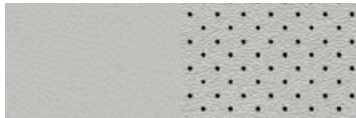
Premium cloth – Black with Storm Blue
accent stitching
Standard on North



Premium cloth – Light Frost with
Copperhead accent stitching
Standard on North



Nappa leather-faced with perforated
inserts – Black with Iceland Grey
accent stitching
Standard on Limited



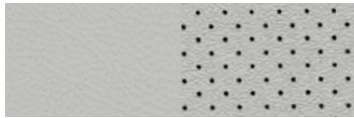
Nappa leather-faced with perforated
inserts – Ski Grey with Cattle Tan
accent stitching
Standard on Limited



Vinyl with premium cloth inserts – Black
with Red accent stitching
Standard on Trailhawk®



Nappa leather-faced with perforated
inserts – Black with Red accent stitching
Available on Trailhawk with Trailhawk Elite



Nappa leather-faced with perforated
inserts – Ski Grey with Iceland Grey
accent stitching
Standard on Overland®



Nappa leather-faced with perforated
inserts – Black with Cattle Tan
accent stitching
Standard on Overland



Nappa leather-faced with perforated
inserts – Dark Sienna with Light Frost
accent stitching
Standard on Overland



Billet Silver Metallic



Bright White



Diamond Black Crystal Pearl



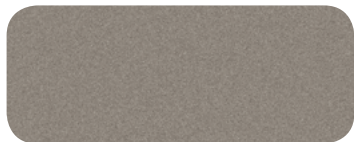
Firecracker Red



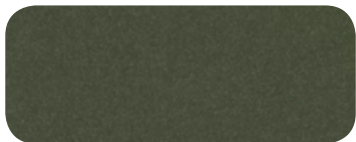
Granite Crystal Metallic



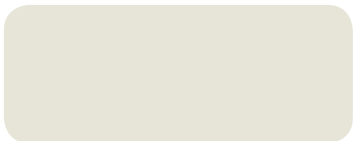
Hydro Blue Pearl



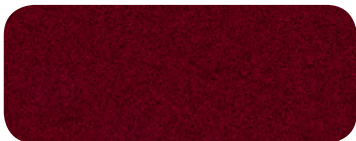
Light Brownstone Pearl



Olive Green Pearl



Pearl White



Velvet Red Pearl

*Colours may not be available on all models, and may be limited/restricted. Please see your retailer for details.



17-inch steel
Standard on Sport



17-inch aluminum
Standard on North



18-inch polished aluminum
with Tech Grey Pockets
Standard on Limited



17-inch aluminum with
Titanium Satin Pockets
Standard on Trailhawk



17-inch Black aluminum
Available on Trailhawk



19-inch polished aluminum
with Hyper Black Pockets
Standard on Overland

CHEROKEE FEATURES AND OPTIONS

SPORT 4x4/4x2



POWERTRAIN

- 2.4L Tigershark® MultiAir® I-4 with Engine Stop/Start (ESS) technology
- 3.2L Pentastar™ Variable Valve Timing (VVT) V6 with ESS technology
- 9-speed automatic transmission

INTERIOR AMENITIES

- Air conditioning with rear HVAC outlets and air filtering
- Electronic Vehicle Information Centre (EVIC)
- Front and rear carpet floor mats
- Full-length floor console, media centre electronics storage, instrument-panel top storage bin, overhead console with sunglasses holder and locking glove box
- Height-adjustable cargo floor
- Media Centre:
 - Hands-free communication⁵ with Bluetooth® streaming audio
 - Media hub with 3 USB ports and auxiliary audio input jack
 - Uconnect® 3 with 5-inch touchscreen and 6 speakers
- Power windows with driver's 1-touch down
- Seating:
 - Cloth
 - Rear 60/40 split-folding seat with armrest and cup holders
- Steering wheel-mounted cruise controls
- Three 12-volt auxiliary power outlets

EXTERIOR FEATURES

- Black, power exterior mirrors and Black door handles
- Bright exhaust tip
- Capless fuel filler
- LED daytime running lamps (DRLs) and taillamps
- LED low-/high-beam headlamps
- Rear window wiper, washer and defroster
- Wheels and Tires:
 - 17-inch steel wheels
 - 225/60R17 BSW all-season tires

SAFETY & SECURITY

- 8 air bags¹⁷ including driver and front-passenger knee blockers
- Brake stability control and Trailer Sway Control (TSC)
- Electronic park brake with SafeHold
- Electronic Stability Control (ESC)⁷ with Electronic Roll Mitigation (ERM), Hill Start Assist and All-Speed Traction Control
- Keyless entry and anti-theft engine immobilizer
- Lock-on-sync tire pressure sensor, tire pressure monitoring display and tire service kit
- ParkView® Rear Back-Up Camera¹⁴
- Reactive front head restraints¹⁸
- Tire-fill notification

CAPABILITY & FUNCTIONALITY

- 3.251 final-drive ratio (3.2L)
- 3.734 final-drive ratio (2.4L)
- Aerodynamic underbody treatment

4x4 ADDS/DIFFERENCES

- 225/65R17 BSW all-season tires
- Compact spare tire
- Jeep® Active Drive I 4x4 system
- Selec-Terrain® Traction Management System

OPTIONAL EQUIPMENT

- Bright Side Roof Rails
- Cold Weather Group
- Compact Spare Tire (4x2)
- Popular Appearance Group
- SiriusXM Satellite Radio with 1-Year Subscription⁹
- Trailer Tow Group
- Uconnect 4 Multimedia Centre with 7-inch Touchscreen

NORTH 4x4/4x2



POWERTRAIN

- 2.4L Tigershark MultiAir I-4 with ESS technology
- 3.2L Pentastar VVT V6 with ESS technology
- 2.0L I-4 Turbo with ESS technology
- 9-speed automatic transmission

ENHANCEMENTS vs. SPORT

- 17-inch aluminum wheels
- Air conditioning with rear HVAC outlets, air filtering and integrated climate controls in touchscreen radio
- Ambient LED interior lighting
- Automatic headlamps
- Body-colour exterior mirrors and door handles
- Bright side window mouldings and side roof rails
- Deep-tint privacy glass
- Leather-wrapped steering wheel with mounted audio and cruise controls
- LED fog lamps
- Media Centre:
 - Apple CarPlay¹³ and Android Auto^{TM13}
 - Uconnect 4 multimedia centre with 7-inch touchscreen
- Power 8-way driver's seat with 4-way power lumbar adjust
- Power windows with front 1-touch up and down
- SiriusXM satellite radio including 1-year subscription⁹

4x4 ADDS / DIFFERENCES

- 225/65R17 BSW all-season tires
- Compact spare tire
- Jeep Active Drive I 4x4 system
- Selec-Terrain Traction Management System

OPTIONAL EQUIPMENT

- Alpine® Premium Sound System with 9 Amplified Speakers and Subwoofer
- Cold Weather Group
- Comfort / Convenience Group
- CommandView® Dual-Pane Panoramic Sunroof
- Compact Spare Tire (4x2)
- Jeep Active Drive II (4x4) (3.2L or 2.0L)
- SafetyTec™ Group
- Trailer Tow Group

CHEROKEE FEATURES AND OPTIONS

LIMITED 4x4/4x2



POWERTRAIN

- 2.4L Tigershark® MultiAir® I-4 with Engine Stop/Start (ESS) technology (4x2 only)
- 3.2L Pentastar™ Variable Valve Timing (VVT) V6 with ESS technology
- 2.0L I-4 Turbo with ESS technology
- 9-speed automatic transmission

ENHANCEMENTS vs. NORTH

- 7-inch full-colour customizable in-cluster display centre
- 18-inch polished aluminum wheels
- 115-volt auxiliary power outlet
- 225/55R18 BSW all-season tires
- Air conditioning with Dual-Zone Automatic Temperature Control (ATC), humidity sensor and premium air filter
- Auto-dimming rearview mirror
- Bright front and rear lower fascia accents
- Cargo compartment cover
- Heated front seats
- Heated, multifunctional, manual folding exterior mirrors with courtesy lamps and supplemental turn signals
- Heated steering wheel
- Keyless Enter 'n Go™ with proximity entry and push-button start
- Leather-wrapped shift knob
- Memory features: radio settings, driver's seat, exterior mirrors
- Power liftgate
- Remote start system

• ENHANCEMENTS vs. NORTH continued

- Seating:
 - Nappa leather-faced and premium interior accents
 - Power 8-way driver and front-passenger seat with 4-way power lumbar adjust
- Security alarm
- Uconnect® 4 multimedia centre with 8.4-inch touchscreen
- Universal garage door opener¹⁶
- Windshield wiper de-icer

4x4 ADDS/DIFFERENCES

- 225/60R18 BSW touring tires
- Compact spare tire
- Jeep® Active Drive I 4x4 system
- Selec-Terrain® Traction Management System

OPTIONAL EQUIPMENT

- Alpine® Premium Sound System with 9 Amplified Speakers and Subwoofer
- CommandView® Dual-Pane Panoramic Sunroof
- Compact Spare Tire (4x2)
- Jeep Active Drive II (4x4)
- Luxury Group
- SafetyTec™ Group
- Technology Group
- Trailer Tow Group
- Uconnect 4C NAV Multimedia Centre with 8.4-Inch Touchscreen

TRAILHAWK® 4x4



POWERTRAIN

- 3.2L Pentastar VVT V6 with ESS technology
- 2.0L I-4 Turbo with ESS technology
- 9-speed automatic transmission

STANDARD EQUIPMENT

- 4.083 final-drive ratio
- 7-inch full-colour customizable in-cluster display centre
- Accent-colour grille surrounds, roof rails, exterior mirrors and badging
- Air conditioning with rear HVAC outlets, air filtering and integrated climate controls in touchscreen radio
- Black hood decal
- Exclusive cloth interior with Red accent stitching
- Front and rear all-season floor mats
- Heavy-duty engine cooling
- Jeep Active Drive Lock
- Leather-wrapped shift knob
- LED low-/high-beam headlamps
- Off-road suspension and locking rear axle
- ParkView® Rear Back-Up Camera¹⁴
- Red tow hooks (2 front / 1 rear)
- Selec-Speed™ Control with Hill Ascent and Hill Descent Control
- Skid plate trim on lower rear fascia
- Skid plates: fuel tank, front suspension, transmission and underbody

• STANDARD EQUIPMENT continued

- Trail Rated® badge
- Uconnect 4 multimedia centre with 8.4-inch touchscreen
- Wheels and Tires:
 - 17-inch off-road aluminum wheels
 - 245/65R17 OWL all-terrain tires
 - Full-size spare tire

OPTIONAL EQUIPMENT

- 17-inch Black Aluminum Wheels
- Alpine Premium Sound System with 9 Amplified Speakers and Subwoofer (with Trailhawk Elite only)
- Cold Weather Group
- Comfort/Convenience Group
- CommandView Dual-Pane Panoramic Sunroof
- SafetyTec Group
- Technology Group (with Trailhawk Elite only)
- Trailer Tow Group
- Trailhawk Elite
- Uconnect 4C NAV Multimedia Centre with 8.4-Inch Touchscreen

CHEROKEE FEATURES AND OPTIONS

OVERLAND® 4x4/4x2



POWERTRAIN

- 3.2L Pentastar VVT V6 with ESS technology
- 2.0L I-4 Turbo with ESS technology
- 9-speed automatic transmission

ENHANCEMENTS vs. LIMITED

- 19-inch polished aluminum wheels
- Acoustic windshield and front-door glass
- Alpine premium sound system with 9 amplified speakers and subwoofer
- Blind-Spot Monitoring¹⁴ with Rear Cross-Path Detection¹⁴
- Body-colour fascias, wheel flares, exterior sill mouldings and door cladding
- Body-colour shark fin antenna
- Bright fascia inserts and chin moulding
- Bright front door sill scuff pads
- Chrome tow hooks (2 front)
- Fore/aft adjusting 2nd-row seat
- Hands-free power liftgate
- Heated, leather-wrapped steering wheel with Zebrano high-gloss wood trim and mounted audio and cruise controls
- Heated rear seats
- Leather-wrapped instrument panel

• ENHANCEMENTS vs. LIMITED continued

- Media Centre:
 - SiriusXM Guardian¹²
 - SiriusXM Traffic⁹
 - SiriusXM Travel Link⁹
 - Uconnect 4C NAV multimedia centre with 8.4-inch touchscreen and GPS navigation¹⁵
- Park-Sense® Rear Park Assist System¹⁴
- Premium Berber floor mats
- Premium Insulation Group
- Premium leather-faced heated and ventilated front seats with perforated inserts

4x4 ADDS/DIFFERENCES

- 225/60R18 BSW Touring tires
- Compact spare tire
- Dual bright exhaust tips
- Jeep Active Drive I
- Off-road suspension
- Selec-Terrain Traction Management System

OPTIONAL EQUIPMENT

- CommandView Dual-Pane Panoramic Sunroof
- Compact Spare Tire (4x2 only)
- Heavy-Duty Protection Group (4x4 only)
- Jeep Active Drive II (4x4 only)
- Technology Group
- Trailer Tow Group

PACKAGE AND MULTIMEDIA CENTRE DETAILS

2.0L I-4 TURBO ENGINE

- 3.734 final-drive ratio
- 180-amp alternator
- Acoustic windshield
- Active Noise Control
- Dual bright exhaust tips
- Engine oil cooler
- Engine Stop/Start (ESS) technology

3.2L VARIABLE VALVE TIMING (VVT) V6 ENGINE

- 3.517 final-drive ratio
- 700-amp maintenance-free battery
- Dual bright exhaust tips
- Engine oil cooler
- ESS technology

COLD WEATHER GROUP

- All-season floor mats
- Heated front seats
- Heated leather-wrapped steering wheel with mounted audio controls
- Leather-wrapped shift knob
- Power, heated, manual folding exterior mirrors
- Remote start system
- Windshield wiper de-icer

COMFORT/CONVENIENCE GROUP

- Air conditioning with Dual-Zone Automatic Temperature Control (ATC), air filtering and humidity sensor
- Auto-dimming rearview mirror
- Cargo compartment cover
- Keyless Enter 'n Go™ with proximity entry, push-button start and remote start system
- Power 8-way driver's seat with 4-way lumbar adjust
- Power liftgate
- Security alarm
- Universal garage door opener¹⁶

HEAVY-DUTY PROTECTION GROUP

- Front suspension skid plates
- Fuel tank skid plate
- Full-size spare tire
- Transmission skid plate
- Underbody skid plate

LUXURY GROUP

- Fore/aft adjusting 2nd-row seat
- Hands-free power liftgate
- Ventilated front seats

SAFETYTEC™ GROUP

- Blind-Spot Monitoring¹⁴ with Rear Cross-Path Detection¹⁴
- Park-Sense® Rear Park Assist System¹⁴
- Power, heated, manual folding exterior mirrors with supplemental turn signals and courtesy lamps

TECHNOLOGY GROUP

- Adaptive Cruise Control with Stop and Go (ACC STOP)¹⁴
- Advanced Brake Assist
- Auto High-Beam Headlamp Control
- Exterior mirrors with supplemental turn signals and courtesy lamps
- Forward Collision Warning (FCW) with Active Braking¹⁴
- Lane Departure Warning (LDW) with Lane Keep Assist¹⁴
- Parallel and Perpendicular Park Assist¹⁴
- Rain-sensing windshield wipers

TRAILER TOW GROUP

- 3.517 final-drive ratio (on 4x4 models with 3.2L engine); 3.734 final-drive ratio (on 4x4 models with 2.0L engine)
- 4- and 7-pin wiring harness
- Auxiliary transmission oil cooler
- Class III hitch receiver
- Full-size spare tire
- Heavy-duty engine cooling (3.2L or 2.0L)

TRAILHAWK® ELITE

- Air conditioning with Dual-Zone ATC, humidity sensor and premium air filter
- Auto-dimming rearview mirror
- Cargo compartment cover
- Hands-free power liftgate
- Heated and ventilated front seats with perforated inserts
- Heated, multifunctional, manual folding exterior mirrors with courtesy lamps and supplemental turn signals
- Heated steering wheel
- Keyless Enter 'n Go with proximity entry, push-button start and remote start system
- Memory features: radio settings, driver's seat, exterior mirrors
- Power 8-way driver and front-passenger seat with 4-way power lumbar adjust
- Premium leather-faced seats
- Security alarm
- Universal garage door opener¹⁶
- Windshield wiper de-icer

UCONNECT® 3

- 5-inch high-definition full-colour touchscreen display
- AM/FM radio
- Charging USB port in console
- Hands-free communication⁵ with Bluetooth® streaming audio
- HVAC control integration
- Media hub including USB port and auxiliary audio input jack
- SiriusXM satellite radio with 1-year subscription⁹ including Tune Start, replay and alert setting for favourite songs, artists and sports teams (Standard on North, Available on Sport)

UCONNECT 4

Uconnect 4 features plus:

- 7-inch or 8.4-inch high-definition (HD) full-colour touchscreen
- AM/FM radio
- Apple CarPlay¹³ and Android Auto^{TM13}
- Do Not Disturb, Drag and Drop menu bar, and Siri® Eyes Free¹¹
- Hands-free communication⁵ with Bluetooth streaming audio
- HVAC control integration
- Media hub including auxiliary audio input jack and 3 USB ports
- SiriusXM satellite radio with 1-year subscription⁹ including Tune Start, replay and alert settings

UCONNECT 4C NAV

Uconnect 4 features plus:

- 4G LTE Wi-Fi hotspot[†]
- 8.4-inch HD full-colour touchscreen
- GPS navigation¹⁵
- HD radio
- Off-Road Information Pages^{*,†}
- SiriusXM Guardian¹² with 1-year subscription
- SiriusXM Travel Link⁹ and SiriusXM Traffic⁹ with 5-year subscription

[†]Late availability. *Available on select models.



For full specifications and package details, visit Jeep.ca

POWER AND FUEL ECONOMY

Based on *EnerGuide* fuel consumption ratings. Government of Canada test methods used. Your actual fuel consumption will vary based on driving habits and other factors. For *EnerGuide* information, please ask your retailer or visit the Government of Canada Web site: www.vehicles.nrcan.gc.ca

Engine and Transmission	Fuel Economy – L / 100 km (imp mpg)		Horsepower	Torque (lb-ft)
	City	Highway		
2.0L I-4 Turbo Engine with 9-speed automatic (4x2)	10.4 (27)	7.6 (37)	270	295
2.0L I-4 Turbo Engine with 9-speed automatic (4x4, Jeep® Active Drive I)	11.2 (25)	8.0 (35)	270	295
2.0L I-4 Turbo Engine with 9-speed automatic (4x4, Jeep Active Drive II)	11.5 (25)	8.6 (33)	270	295
2.0L I-4 Turbo Engine with 9-speed automatic (4x4, Jeep Active Drive Lock)	11.8 (24)	9.2 (31)	180	170
2.4L Tigershark® MultiAir® I-4 with 9-speed automatic (4x2)	10.8 (26)	7.6 (37)	180	170
2.4L Tigershark MultiAir I-4 with 9-speed automatic (4x4, Jeep Active Drive I)	11.2 (25)	8.0 (35)	180	170
3.2L Pentastar™ VVT V6 with 9-speed automatic (4x2)	11.9 (24)	8.2 (34)	271	239
3.2L Pentastar VVT V6 with 9-speed automatic (4x4, Jeep Active Drive I)	12.2 (23)	8.6 (33)	271	239
3.2L Pentastar VVT V6 with 9-speed automatic (4x4, Jeep Active Drive II)	12.8 (22)	9.0 (31)	271	239
3.2L Pentastar VVT V6 with 9-speed automatic (4x4, Jeep Active Drive Lock)	12.9 (22)	9.9 (29)	271	239

Towing (when properly equipped)	2.4L / 3.2L / 2.0L		2.0L / 3.2L with Trailer Tow Group	
kg (lb)	907 (2000)		1814 (4000) / 2041 (4500)	
Exterior, mm (in.)	4x2	Jeep Active Drive I 4x4	Jeep Active Drive II 4x4	Jeep Active Drive Lock 4x4 (Trailhawk®)
Overall Height with Roof Rack	1669 (65.7)	1681 (66.2)	1709 (67.3)	1722 (67.8)
Overall Width	1860 (73.2)	1860 (73.2)	1860 (73.2)	1902 (74.9)
Overall Length	4623 (182)	4623 (182)	4623 (182)	4623 (182)
Ground Clearance, Minimum Running	150 (5.9)	201 (7.9)	208 (8.2)	221 (8.7)
Interior, mm (in.)	Front		Rear	
Headroom	1000 (39.4)		978 (38.5)	
Legroom	1044 (41.1)		1024 (40.3)	
Hip Room	1367 (53.8)		1267 (49.9)	
Shoulder Room	1463 (57.6)		1400 (55.1)	
Volumes and Capacities				
Interior Volume Index, L (cu ft)	3625 (128)			
Total Passenger Volume, L (cu ft)	2928 (103.4)			
Cargo, Rear Seat Up and Fully Back, L (cu ft)	781 (27.6)			
Cargo, Rear Seat Folded, L (cu ft)	1634 (57.7)			
Seating Capacity	5			
Fuel Tank Capacity, L (imp gal)	60 (13.1)			

ABOUT THIS CATALOGUE. Since the time of printing, some of the information you'll find in this catalogue may have been updated. Ask your retailer for details. Some of the equipment shown or described throughout this catalogue is available at extra cost. Specifications, descriptions, illustrative materials and all competitive comparisons contained herein are as accurate as known at the time this publication was approved for printing. FCA Canada Inc. reserves the right to make changes at any time without notice and without incurring obligation. For the price of the model with the equipment you desire or verification of specifications contained herein, see your Chrysler, Jeep, Dodge and Ram retailer. Chrysler, Jeep, Dodge, Ram, Mopar, SRT, the Jeep grille, Cherokee, CommandView, Mopar Vehicle Protection, Park-Sense, ParkView, Selec-Terrain, Tigershark, Trailhawk, Trail Rated, Overland and Uconnect are registered trademarks, and Jeep Active Drive I, Jeep Active Drive II, Jeep Active Drive Lock, Keyless Enter 'n Go, Pentastar, SafetyTec, Selec-Speed and Send & Go are trademarks of FCA US LLC. Bluetooth is a registered trademark of Bluetooth SIG, Inc. Cummins is a registered trademark of Cummins, Inc. Facebook is a registered trademark of Facebook, Inc. Firestone is a registered trademark of Firestone Tire & Rubber Company. MultiAir is a registered trademark of C.R.F. Società Consortile per Azioni, used under licence by FCA US LLC. SIRIUS, XM and related marks and logos are trademarks of SiriusXM Radio Inc. Alpine and the Alpine logo are registered trademarks of Alpine Electronics, Inc. iPhone and Siri are registered trademarks of Apple Inc. All rights reserved. Android Auto is a trademark of Google LLC. The Twitter name, logo, Twitter T, Tweet and Twitter bird are trademarks of Twitter, Inc. in the United States and other countries. Instagram is a registered trademark of Instagram, Inc. Ward's is a registered trademark of PENTON BUSINESS MEDIA, INC. ©2018 FCA Canada Inc. All rights reserved.

MOPAR VEHICLE PROTECTION® FCA Canada Inc. has a vested interest in your satisfaction and owner experience with your new vehicle. Mopar Vehicle Protection offers extended service and maintenance plans to help ensure you'll enjoy your vehicle for many years down the road — for just pennies a day. For more information on comprehensive vehicle coverage, see your local Chrysler, Jeep, Dodge and Ram retailer or call (800) 465-2001.

WARRANTIES. 2019 Chrysler, Jeep, Dodge and Ram vehicles are backed by a 5-year or 100,000-kilometre fully transferable Powertrain Limited Warranty* with \$0 deductible plus 24-hour roadside assistance.† SRT vehicles are backed by a 3-year or 60,000-kilometre fully transferable Powertrain Limited Warranty* with \$0 deductible plus 24-hour roadside assistance. Basic Warranty coverage is for 3 years or 60,000 kilometres.* Rust-through coverage on all body sheet metal is for 3 years. The Cummins Turbo Diesel engine is protected by a separate Limited Warranty, covering the engine for 5 years or 160,000 kilometres.* The EcoDiesel engine is backed by a 5-year or 100,000-kilometre fully transferable Powertrain Limited Warranty* with \$0 deductible plus 24-hour roadside assistance.†

*Whichever comes first. Some conditions may apply. †The 5-Year/100,000-Kilometre Powertrain Limited Warranty does not apply to vehicles sold for certain commercial uses. See your retailer for full details.

DISCLAIMERS. 1) Based on WardsAuto Middle Cross Utility segmentation. Best-in-Class capability based on Jeep Cherokee offering 2-speed power transfer unit (PTU) with rear locking axle, exclusive Jeep Selec-Terrain with 5 settings (including Rock), industry-first fully disconnecting driveline, Best-in-Class towing (excluding 7- and 8-passenger vehicles), approach angle, departure angle and ramp breakover angle. 2) Based on Jeep Cherokee offering 2-speed power transfer unit (PTU) with rear locking axle, low-range 4x4 capability, exclusive Jeep Selec-Terrain with 5 settings (including Snow). 3) Based on WardsAuto Middle Cross Utility segmentation. Excludes 7- and 8-passenger vehicles. When equipped with 3.2L Pentastar VVT V6 engine with Trailer Tow Group. 4) Based on total sales from January 1, 2016 to present for SUV vehicles. 5) Driving while distracted can result in loss of vehicle control. Only use mobile phones and other devices, even with voice commands, when it is safe to do so. Voice commands of phone require a Bluetooth-compatible phone. 6) Based on WardsAuto Middle Cross Utility segmentation. 7) No system can repeal the laws of physics or overcome careless driving actions. Performance is limited by available traction, which snow, ice and other conditions can affect. When the warning lamp flashes, the driver needs to use less throttle and adapt speed and driving behaviour to prevailing road conditions. 8) Do not attempt water fording unless depth is known to be less than 48 cm (19 inches). Traversing water can cause damage that may not be covered by the new vehicle warranty. Always off-road responsibly in approved areas. 9) Requires SiriusXM radio subscriptions governed by SIRIUS terms and conditions available at siriusxm.ca. 10) Based on WardsAuto Middle Cross Utility segmentation. Excludes other vehicles designed and manufactured by FCA US LLC. 11) Siri Eyes Free requires an iPhone equipped with Siri. Certain features not available while the vehicle is in motion. iPhone must be within active cellular range. Customer's existing iPhone data rates apply to Internet-supported features. 12) All SiriusXM Guardian-equipped vehicles come with a 12-month trial effective on the date of purchase or lease of a new vehicle. Enrollment in the trial is required to receive service. Upon expiration of the trial period, purchase of a subscription is required to continue SiriusXM Guardian. Services can only be used where cellular coverage is available. See Uconnect and SiriusXM Guardian Terms of Service for complete service limitations. 13) Driving while distracted can result in loss of vehicle control. Only use mobile phones and other devices, even with voice controls, when it is safe to do so. Apple CarPlay requires a compatible iPhone connected via USB cable to the Uconnect system. Android Auto requires the Android Auto app on Google Play and an Android-compatible smartphone running Android 5.0 Lollipop or higher. Data plan rates may apply. 14) This is a driver convenience system, not a substitute for active driver involvement. The driver must remain aware of his/her surroundings and be prepared to take corrective action to avoid collisions. 15) Never program while driving. GPS mapping and available 3D navigation may not be detailed or available in all areas or reflect current road regulations. 16) Not compatible with all garage door openers. 17) The Advanced Front Air Bags in this vehicle are certified to the federal regulations for Advanced Air Bags. Children 12 years old and younger should always ride buckled up in a rear seat. Infants in rear-facing child restraints should never ride in the front seat of a vehicle with a passenger front air bag. All occupants should always wear their lap and shoulder belts properly. 18) Always sit properly with the head restraint properly adjusted. Never place anything in front of the head restraint.

Jeep®



(800) 361-3700

jeep.ca