

2022 GRAND CHEROKEE WK

Jeep®





# RISING TO NEW HEIGHTS

THE RENOWNED PEDIGREE OF JEEP® GRAND CHEROKEE RISES FROM A HISTORY OF PROVEN STRENGTH AND CAPABILITY, AS WELL AS A REPUTATION FOR A LUXURIOUS AND COMFORTABLE DRIVING EXPERIENCE. TAKE TO ANY ROAD, HIGHWAY OR TRAIL WITH CONFIDENCE, KNOWING YOU'RE RIDING WITH A MASTER OF AUTHENTIC 4x4 AUTHORITY AND AN ICON OF JEEP® BRAND DESIGN.



# EXPAND YOUR AESTHETICS IN LIMITED

**MASTERFULLY CRAFTED FROM ALL ANGLES,** Jeep® Grand Cherokee WK Limited welcomes you into a world of luxury that leaves little to be desired. The heated, leather-trimmed steering wheel and front-row seats are warm and welcoming in cold weather. The standard Uconnect® 4C NAV radio with its 8.4-inch full-color touchscreen display dominates the front dash and, when paired with the available premium Alpine® Surround Sound System with Active Noise Cancellation, delivers top quality sound, entertainment and communication features. Peace of mind arrives with the standard ProTech I Safety and Security Package that includes the Blind Spot Monitoring<sup>1\*</sup> and Rear Cross-Path Detection<sup>2</sup> Systems, ParkSense® Rear Park Assist System<sup>3</sup> and ParkView® Rear Back-Up Camera.<sup>2</sup>

\* A note about this brochure: all disclosures can be found on the last page.





Laredo in Bright White

# ENTER GRAND CHEROKEE WK TERRITORY IN LAREDO

**OPEN THE DOOR TO THE WORLD** of authentic Jeep® Grand Cherokee WK refinement. It's brimming with all of the features that give you permission to travel to those places others only dream of reaching. This renowned master of freedom and adventure owns an elite pedigree born of legendary strength and style. The exterior is immediately recognizable with its iconic seven-slot, bright-trimmed grille, and the interior brims with a full list of standard and available features intended to pamper all passengers. Powered by the proven 3.6L Pentastar® V6 engine with efficient Engine Stop/Start technology and matched to the 8-speed automatic transmission, Laredo hands over full confidence to boldly move ahead.



# THE GRAND SCHEME OF LIFE

EXPLORE THE BIG PICTURE of adventure while enjoying the refined pleasures offered in Jeep® Grand Cherokee WK, revered the world over for its luxury and comfort.

**HEATED SEATS** Both the first and second rows are heated for the driver and front passenger. Available.

**DUAL-ZONE AUTOMATIC TEMPERATURE CONTROL** Constantly adjusts air temperature inside the cabin to create separate, customized environments for the driver and front passenger. Standard.

**ACOUSTIC GLASS** Acoustic windshield and laminated front-door glass help remove the distractions of traffic and wind noise to deliver a noticeably hushed and peaceful ride. Standard.

**ACTIVE NOISE CANCELLATION** This sound-absorbing technology enhances the effect of the acoustic glass in place on the windshield and side windows. Available.

# SEASONS OF MASTERY

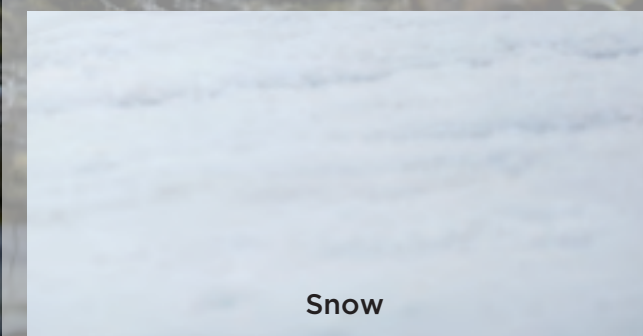
Head out with confidence. You're equipped to go anywhere, thanks to the proven capabilities of authentic Jeep® Brand Four-Wheel-Drive (4WD) systems and traction management.



Rock

**SELEC-TERRAIN® TRACTION MANAGEMENT SYSTEM** Five selectable settings let you dial in to the type of 4WD traction control your Jeep Grand Cherokee WK needs at any particular moment. Selec-Terrain® pairs with an available 4x4 system, giving you the ability to tailor your capability to the road and driving conditions. Selec-Terrain helps to adapt traction performance with a selectable dial that features Snow, Sand, Auto, Mud and Rock settings. This intelligent system gives you ultimate driving confidence by coordinating 12 vehicle systems, including throttle control. Available.

**OFF-ROAD PAGES** Access real-time performance data so you know just how far your suspension is traveling, and see how you're faring on the trail with the tilt-and-pitch gauge. In-depth vehicle diagnostics, including wheel turn, articulation and transmission temperature, all help to provide an optimized experience. Standard.



Snow



Sand



Mud



Auto



# AUTHENTIC 4x4 AUTHORITY

## **JEEP® BRAND FOUR-WHEEL-DRIVE (4WD) SYSTEMS**

**QUADRA-TRAC II®** All-Speed Traction Control quickly distributes power to the axle with the most traction. The two-speed transfer case acts quickly to keep you moving wherever challenging road conditions are found. Available.

**QUADRA-TRAC I®** Let this fully automatic 4WD system do the thinking for you. It can adjust traction without the need for driver input, so you can keep moving forward with an optimal balance of torque distribution. Available.

# HARNESS THE POWER

**HILL DESCENT CONTROL (HDC) AND HILL START ASSIST (HSA)** engage the throttle to help provide stable, low-range control when going uphill and use engine and physical braking to aid in vehicle control when going downhill. Available.





# STRONG FOR THE LONG HAUL

Jeep® Grand Cherokee WK puts a range of advanced powertrain options in front of you. Choose how you'd like to move forward with strength, capability and plenty of fortitude to tow.

**THE EFFICIENT AND POWERFUL 3.6L PENTASTAR® V6 ENGINE** Meet the standard, proven performer for Grand Cherokee WK. Its strength can pull up to 6,200 lb when properly equipped, and its economies can deliver a manufacturer's-estimated 19 city / 26 hwy mpg.<sup>4</sup> Engine Stop / Start (ESS) technology seamlessly and automatically shuts off the engine at full stops, then re-engages for takeoffs, resulting in efficiencies in fuel and lower emissions. Standard.

**STANDARD 8-SPEED AUTOMATIC TRANSMISSION** Moves with efficient, smooth-riding might, consistently using energy to its best advantage. You'll feel the enhanced acceleration and appreciate the reduced fuel consumption. Increased torque adds strength to pull.

**ECO MODE** maximizes fuel efficiency. It automatically modifies the shift schedule and torque converter. When you activate Eco Mode, idle speed is gently lowered, allowing gains in precious efficiency.



# IT'S WHAT YOU BRING TO THE PARTY

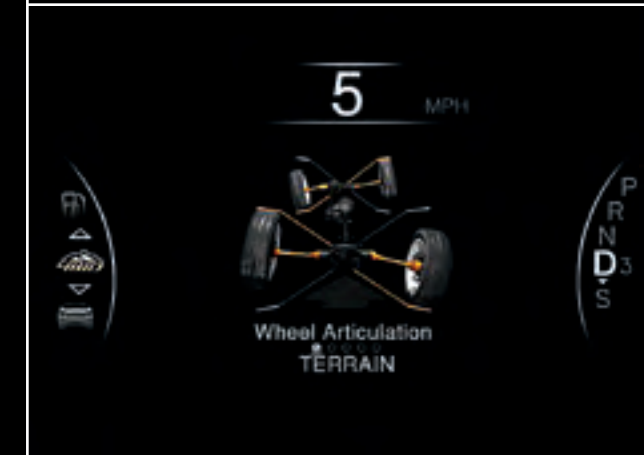
Tow up to 6,200 lb with the Trailer Tow Group IV. It includes heavy-duty engine cooling, a Class IV hitch receiver, a four- and seven-pin wiring harness, rear load-leveling suspension and a full-size spare. Available.



Limited in Bright White  
Properly secure all cargo. Always tow within the vehicle's capacity.

# DISCOVER WHAT **DRIVES YOU**

Access the 7-inch reconfigurable Multi-View Display Cluster while keeping your eyes safely on the road via controls on the steering wheel. You'll instantly scroll through a selection of vehicle data displayed on your instrument panel, including available navigation, performance stats, alerts and estimated fuel consumption. Standard.



Uconnect®

### SIRIUSXM® RADIO<sup>5</sup>

Tune in and travel well. SiriusXM®<sup>5</sup> connects you with the ultimate entertainment experience, including over 165 channels of commercial-free music, plus sports, news, talk and comedy. 6-month trial. Available.

(((SiriusXM)))

### PHONE / TEXT

Pair up to eight phones, make calls, use voice commands to hear and respond to texts, select media stations and access navigation. Includes Apple CarPlay®<sup>6</sup> support with your connected iPhone® and Android Auto™<sup>7</sup> compatibility with your Android™ smartphone. Standard.



### CONNECTIONS

With Siri® Eyes Free® and your connected iPhone, use voice commands to make calls, create and send texts, and more. GPS Navigation helps you travel the best routes. A 4G Wi-Fi Hotspot® (1GB or 3-month trial) connects with up to eight devices within 50 feet of your vehicle. Available.

### SIRIUSXM TRAFFIC PLUS<sup>15</sup>

Avoid tie-ups, road closures and construction with continuous traffic updates. 5-year trial. Available.

SiriusXM  
**TRAFFIC PLUS**

### SIRIUSXM GUARDIAN™<sup>10</sup>

Enjoy a suite of safety and convenience features, including SOS Call,<sup>11</sup> lock / unlock or start your car<sup>12</sup> from anywhere, and much more. 1-year trial. Available.



### START YOUR CAR FROM AFAR

Send destinations, lock the doors, check fuel status and more using the available Jeep® Skill for Amazon Alexa<sup>14</sup> or the available Jeep Action on Google on your voice-assistant-enabled devices.



### SIRIUSXM TRAVEL LINK<sup>15</sup>

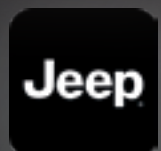
Get weather maps, forecasts and alerts, plus sports scores and schedules, fuel prices and more. 5-year trial. Available.

SiriusXM  
**TRAVEL LINK**

## A LOT TO CONNECT WITH

The Uconnect® system is your customizable, connected vehicle platform dedicated to safe and seamless communication, navigation and entertainment — all from one easy-to-use touchscreen. You're always connected with Uconnect, whether in your vehicle or via the Jeep App<sup>13</sup> on your device, which allows you to lock and unlock your vehicle remotely.

LEARN MORE ABOUT  
UCONNECT® AND RELATED  
SERVICES AT  
[DRIVEUCONNECT.COM](http://DRIVEUCONNECT.COM)  
OR THE JEEP APP.<sup>13</sup>





## ON GUARD WHEREVER YOU GO

**PEACE OF MIND RIDES WITH YOU** When you're carrying precious cargo, you want to do all you can to keep your passengers safe and secure. With a robust list of standard and available safety and security features, including the ProTech II Group that delivers key complementary features grouped together, Jeep® Grand Cherokee WK helps you remain confident driving in all weather conditions, over any terrain. The strength of a reinforced structure adds a welcome layer between you and the outside world, with both passive and active systems working together to give you well-earned confidence wherever you go.

# SAFETY & SECURITY

## ProTech I STANDARD

- ParkView® Rear Back-Up Camera<sup>2</sup> with Dynamic Grid Lines and Trailer View
- Blind Spot Monitoring<sup>1</sup> and Rear Cross-Path Detection<sup>2</sup> Systems
- ParkSense® Rear Park Assist System<sup>3</sup>

## ProTech II AVAILABLE

- Adaptive Cruise Control with Stop<sup>16</sup> (Limited trim)
- Parallel and Perpendicular Park Assist<sup>3</sup> (Limited trim)
- Forward Collision Warning with Active Braking<sup>17</sup>
- LaneSense® Lane Departure Warning with Lane Keep Assist<sup>18</sup>
- Rain-Sensing Windshield Wipers (Limited trim)
- Advanced Brake Assist
- Auto High-Beam Headlamps (Laredo trim)



### **BLIND SPOT MONITORING<sup>1</sup> AND REAR CROSS-PATH DETECTION<sup>2</sup> SYSTEMS**

These systems monitor the space between you and other drivers. When a side or rear blind spot is encroached, you're notified via helpful icons illuminated on sideview mirrors and an audible chime. Standard.

### **PARKVIEW<sup>®</sup> REAR BACK-UP CAMERA<sup>2</sup> WITH DYNAMIC GRID LINES AND TRAILER VIEW**

Back out safely with grace. This system helps bring previously hidden rear objects to your attention, either on-screen or with an audible warning, in good time to react. You can also keep an eye on anything in tow while in motion. Standard.

### **PARKSENSE<sup>®</sup> REAR PARK ASSIST SYSTEM<sup>3</sup>**

Works in tandem with ParkView<sup>®</sup> Rear Back-Up Camera.<sup>2</sup> When the vehicle is in Reverse, the screen displays a dynamic distance grid to help gauge your rear perimeter. Standard.



### **ELECTRONIC STABILITY CONTROL (ESC)<sup>19</sup>**

A vehicle-wide network of safety sensors helps maintain vehicle control, providing instant aid should it detect you're veering off your intended path. ESC<sup>19</sup> coordinates Electronic Roll Mitigation (ERM), Antilock Brake System (ABS) and Brake Assist, All-Speed Traction Control and Trailer Sway Control (TSC);<sup>20</sup> sending them into action when needed. Standard.



**ADAPTIVE CRUISE CONTROL WITH STOP (ACC STOP)<sup>16</sup>** Take the guesswork out of keeping a safe following distance from the car ahead while cruising on the highway. The system automatically adjusts cruising speed to maintain a preset distance between you and the vehicle ahead and can bring Jeep<sup>®</sup> Grand Cherokee WK to a complete stop, without driver intervention, to help avoid a collision. Available.

**FORWARD COLLISION WARNING WITH ACTIVE BRAKING (FCW+)<sup>17</sup>** Sensors detect when Grand Cherokee WK may be approaching another vehicle too rapidly, sending an audible and visual alert to the driver and providing 1.5 seconds of brake assistance if the driver does not react in time. Available.

**PARALLEL AND PERPENDICULAR PARK ASSIST<sup>3</sup>** This active guidance system controls steering automatically by using ultrasonic sensors that help you ease into parking spots. Includes ParkSense<sup>®</sup> Front Park Assist<sup>3</sup> sensors. Available.

**LANESENSE<sup>®</sup> LANE DEPARTURE WARNING WITH LANE KEEP ASSIST (LDW+)<sup>18</sup>** Provides a visual and audible warning should the vehicle drift outside of lane boundaries or if the driver's hands are off the wheel. Available.

**RAIN-SENSING WINDSHIELD WIPERS AND RAIN BRAKE SUPPORT** Rain showers should never be a showstopper. Front wipers activate when raindrops are detected. The smart brake system helps dry the brake rotors on wet roads. Available.

**INTEGRATED VOICE COMMAND WITH BLUETOOTH<sup>®</sup>** Allows drivers to safely send, reply or listen to a text<sup>21</sup> (not compatible with iPhone<sup>®</sup>), take or make phone calls, and request detailed information, like fuel prices, while keeping both hands on the wheel. Standard. Navigation commands available on Uconnect<sup>®</sup> 4C NAV.

**TRAILER SWAY CONTROL (TSC)<sup>20</sup>** Crosswinds and traffic hold no sway over you and your payload. As part of ESC,<sup>19</sup> TSC<sup>20</sup> helps keep you and the toys you tow safely on course. Standard.

**SENTRY KEY<sup>®</sup> ENGINE IMMOBILIZER** A unique, embedded key code matched only to your vehicle helps keep your Grand Cherokee WK safely where you parked it. Standard.

**A SECURE AIR BAG<sup>22</sup> SYSTEM** Your need for security is fully respected with the Grand Cherokee WK all-around air bag<sup>22</sup> system. Full-length side-curtain, seat-mounted side thorax, and advanced multistage front and driver inflatable knee bolster air bags<sup>22</sup> all work together to help provide protection. Standard.

**CHASSIS STRENGTH** Maintain peace of mind with this strong safety cage constructed with 65 percent high-strength steel. Standard.

# LIMITED

## STANDARD

### CAPABILITY

- 3.6L Pentastar® V6 engine with Engine Stop/Start technology
- Quadra-Trac II® Active Full-Time Four-Wheel-Drive (4WD) System (with V6; 4x4 only)
- 8-speed automatic transmission with Classic-style shifter
- Electric power steering with selectable modes
- Selec-Terrain® Traction Management System (4x4 only)

### EXTERIOR

- Power liftgate
- Halogen projector headlamps with daytime running lamps (DRLs)
- Premium fog lamps
- LED taillamps
- 18-inch Technical Grey/Diamond-Cut aluminum wheels
- Power-locking, fuel-filler door
- Deep-tint sunscreen glass
- Chrome power, heated sideview mirrors with memory, auto-dimming for driver and supplemental turn signals
- Acoustic windshield
- Bright roof rails
- Remote start<sup>23</sup> and remote key fobs
- Keyless Enter 'n Go™

### INTERIOR

- Air conditioning with Dual-Zone Automatic Temperature Control
- Heated 1st-row leather-trimmed seats
- Leather-wrapped, heated steering wheel with controls for audio and speed, Siri® Eyes Free<sup>8</sup> and Multi-View Display Cluster
- 7-inch reconfigurable Multi-View Display Cluster
- Front footwell and center console bin lighting
- Power driver and front-passenger seats
- Power sunroof with express-open/close
- HD radio

## STANDARD (continued)

- 6-speaker audio system
- Apple CarPlay<sup>®6</sup> support
- Android Auto™<sup>7</sup> compatibility
- Uconnect® 4C NAV with 8.4-inch display
- SiriusXM® Radio<sup>5</sup> includes 6-month trial subscription
- Integrated Voice Command with Bluetooth®
- SiriusXM Travel Link<sup>15</sup> and SiriusXM Traffic Plus<sup>15</sup> include 5-year trial subscriptions (packaged with Uconnect 4C NAV)

### SAFETY & SECURITY

#### PROTECH I

- Blind Spot Monitoring<sup>1</sup> and Rear Cross-Path Detection<sup>2</sup> Systems
- ParkSense® Rear Park Assist System<sup>3</sup> with Brake Assist
- ParkView® Rear Back-Up Camera<sup>2</sup> with Dynamic Grid Lines and Trailer View
- Hill Start Assist
- Electronic Stability Control<sup>19</sup>
- 7 air bags,<sup>22</sup> including advanced multistage driver and front-passenger, side-curtain, supplemental front-seat side and driver inflatable knee bolster<sup>22</sup>
- Universal Garage Door Opener<sup>24</sup>
- SiriusXM Guardian™<sup>10</sup> with SOS Call<sup>11</sup> and Roadside Assistance Call<sup>25</sup> includes 1-year trial subscription

#### AVAILABLE

- Mopar® Chrome Tubular Side Steps
- Mopar Black Tubular Side Steps

#### MOPAR® INTERIOR PROTECTION GROUP:

Mopar Molded Cargo Tray and Mopar All-Weather Floor Mats

**TRAILER TOW GROUP IV:** Heavy-duty engine cooling, Class IV hitch receiver, 4- and 7-pin wiring harness, rear load-leveling suspension and full-size spare tire

## AVAILABLE (continued)

**PROTECH II:** Advanced Brake Assist, Forward Collision Warning with Active Braking,<sup>17</sup> Rain-Sensing Windshield Wipers, Adaptive Cruise Control with Stop,<sup>16</sup> LaneSense® Lane Departure Warning with Lane Keep Assist,<sup>18</sup> and Parallel and Perpendicular Park Assist<sup>3</sup>

#### MOPAR INTERIOR BRIGHT ACCENTS GROUP:

Mopar Front and Rear Door Sill Guards and Mopar Bright Pedal Kit

**TECH GROUP:** Auto High-Beam Headlamp Control, LED daytime running headlamps, Bi-xenon High Intensity Discharge (HID) headlamps, front LED fog lamps, Active Noise Cancellation System and premium 9-speaker Alpine® Surround Sound System with 506-watt amplifier



1



2



## INTERIORS

- 1) Capri leather with Black accent stitching — Black (standard)
- 2) Capri leather — Light Frost Beige (standard)
- 3) Rose Grain Hydro inserts — Black (standard)

## WHEELS

- 1) 18-inch Technical Grey/Diamond-Cut aluminum (standard)
- 2) 20-inch polished/Technical Grey aluminum (available)



# LAREDO X

## STANDARD

### CAPABILITY

- 3.6L Pentastar® V6 engine with Engine Stop/Start technology
- Quadra-Trac I® Four-Wheel-Drive (4WD) System (4x4 only)
- 8-speed automatic transmission with Classic-style shifter
- Electric power steering with selectable modes

### EXTERIOR

- Halogen projector headlamps with daytime running lamps (DRLs)
- Premium fog lamps
- LED taillamps
- 18-inch Fine Silver aluminum wheels
- Power-locking, fuel-filler door
- Power and heated body-color mirrors with manual foldaway
- Deep-tint sunscreen glass
- Remote key fobs
- Keyless Enter 'n Go™
- Bright roof rails
- Power liftgate

### INTERIOR

- Leather-wrapped, heated steering wheel with controls for audio and speed, Siri® Eyes Free® and Multi-View Display Cluster
- Cruise control
- 7-inch reconfigurable Multi-View Display Cluster
- Air conditioning with Dual-Zone Automatic Temperature Control
- Black suede seats with Black accent stitching
- Front fold-flat passenger seat
- 60/40 split-folding 2nd-row seat
- Interior front footwell and center console bin lighting
- Acoustic windshield
- Uconnect® 4C NAV with 8.4-inch display
- Apple CarPlay® support
- Android Auto™ compatibility

## STANDARD (continued)

- Integrated Voice Command with Bluetooth®
- Universal Garage Door Opener<sup>24</sup>
- 115-volt auxiliary power outlets
- Heated front seats
- 6-speaker audio system
- SiriusXM® Radio<sup>5</sup> includes 6-month trial subscription
- SiriusXM Travel Link<sup>15</sup> and SiriusXM Traffic Plus<sup>15</sup> include 5-year trial subscriptions (packaged with Uconnect 4C NAV)

## SAFETY & SECURITY

### PROTECH I

- Blind Spot Monitoring<sup>1</sup> and Rear Cross-Path Detection<sup>2</sup> Systems
- ParkSense® Rear Park Assist System<sup>3</sup> with Brake Assist
- ParkView® Rear Back-Up Camera<sup>2</sup> with Dynamic Grid Lines and Trailer View

- Electronic Stability Control<sup>19</sup>
- 7 air bags,<sup>22</sup> including advanced multistage driver and front-passenger, side-curtain, supplemental front-seat side and driver inflatable knee bolster<sup>22</sup>
- Hill Start Assist
- Trailer Sway Control<sup>20</sup>
- Security alarm<sup>26</sup>
- Remote start<sup>23</sup>

## AVAILABLE

**ALTITUDE APPEARANCE GROUP:** Single exhaust with bright tip, Laredo Badge Delete, Jeep® Gloss Black badging, dark headlamp bezels, dark taillamp lens, body-color fascia, front and rear accent-/body-color fascia, Gloss Black rear fascia appliqué, dark daylight opening moldings, rear fascia Black molded-in-color, body-color claddings, Altitude grille, body-color shark fin antenna, 265/50R20 A/S LRR BSW tires and 20-inch Gloss Black aluminum wheels (also includes Quadra-Trac II® (4x4 models only))

**SECURITY AND CONVENIENCE GROUP:** Cargo compartment cover, security alarm,<sup>26</sup> remote start,<sup>23</sup> power liftgate, Universal Garage Door Opener,<sup>24</sup> heated steering wheel, 115-volt auxiliary power outlets and heated front seats

## AVAILABLE (continued)

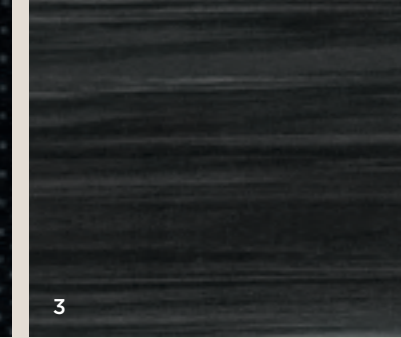
**TRAILER TOW GROUP IV:** Heavy-duty engine cooling, Class IV hitch receiver, 4- and 7-pin wiring harness, rear load-leveling suspension, full-size spare tire (packaged with Quadra-Lift® Air Suspension) and 180-amp alternator

**MOPAR® INTERIOR BRIGHT ACCENTS GROUP:** Mopar® Front and Rear Door Sill Guards and Mopar Bright Pedal Kit

**MOPAR EXTERIOR BRIGHT ACCENTS GROUP:** Mopar Chrome Exhaust Tip and Chrome Mirror Covers

**PROTECH II:** Forward Collision Warning with Active Braking,<sup>17</sup> LaneSense® Lane Departure Warning with Lane Keep Assist,<sup>18</sup> Auto High-Beam Headlamp Control and Advanced Brake Assist

**TECH GROUP:** Auto High-Beam Headlamp Control, LED daytime running headlamps, Bi-xenon High Intensity Discharge (HID) headlamps, front LED fog lamps, Active Noise Cancellation System and premium 9-speaker Alpine® Surround Sound System with 506-watt amplifier



## INTERIORS

- 1) Black suede with Black accent stitching — Black (standard)
- 2) Capri leather and perforated suede with Black accent stitching — Black (available on Altitude)
- 3) Rose Grain appliqué — Black (standard)

## WHEELS

- 1) 18-inch Fine Silver aluminum (standard)
- 2) 20-inch Gloss Black aluminum (available with Altitude Appearance Group)



# LAREDO



## STANDARD

### CAPABILITY

- 3.6L Pentastar® V6 engine with Engine Stop/Start technology
- Quadra-Trac I® Four-Wheel-Drive (4WD) System (4x4 only)
- 8-speed automatic transmission with Classic-style shifter
- Electric power steering with selectable modes

### EXTERIOR

- Halogen projector headlamps with daytime running lamps (DRLs)
- Premium fog lamps
- LED taillamps
- 18-inch Fine Silver aluminum wheels
- Power-locking, fuel-filler door
- Power and heated body-color mirrors with manual foldaway
- Deep-tint sunscreen glass
- Remote key fobs
- Keyless Enter 'n Go™
- Bright roof rails

### INTERIOR

- Leather-wrapped steering wheel with controls for audio and speed, Siri® Eyes Free® and Multi-View Display Cluster
- Cruise control
- 7-inch reconfigurable Multi-View Display Cluster
- Air conditioning with Dual-Zone Automatic Temperature Control
- Premium cloth seats
- Front fold-flat passenger seat
- 60/40 split-folding 2nd-row seat
- Interior front footwell and center console bin lighting
- Acoustic windshield
- Uconnect® 4 NAV with 8.4-inch display
- Apple CarPlay® support
- Android Auto™ compatibility
- Integrated Voice Command with Bluetooth®

## STANDARD (continued)

- 6-speaker audio system
- SiriusXM® Radio<sup>5</sup> includes 6-month trial subscription
- SiriusXM Travel Link<sup>15</sup> and SiriusXM Traffic Plus<sup>15</sup> include 5-year trial subscriptions (packaged with Uconnect 4C NAV)

### SAFETY & SECURITY

#### PROTECH I

- Blind Spot Monitoring<sup>1</sup> and Rear Cross-Path Detection<sup>2</sup> Systems
- ParkSense® Rear Park Assist System<sup>3</sup> with Brake Assist
- ParkView® Rear Back-Up Camera<sup>2</sup> with Dynamic Grid Lines and Trailer View

- Electronic Stability Control<sup>19</sup>
- 7 air bags,<sup>22</sup> including advanced multistage driver and front-passenger, side-curtain, supplemental front-seat side and driver inflatable knee bolster<sup>22</sup>
- Hill Start Assist
- Trailer Sway Control<sup>20</sup>

## AVAILABLE

- Power sunroof with express-open/close
- Mopar® Chrome Tubular Side Steps
- Mopar Black Tubular Side Steps
- MOPAR® INTERIOR PROTECTION GROUP:** Mopar Molded Cargo Tray and Mopar All-Weather Floor Mats
- SECURITY AND CONVENIENCE GROUP:** Cargo compartment cover, security alarm,<sup>26</sup> remote start,<sup>23</sup> power liftgate, Universal Garage Door Opener,<sup>24</sup> heated steering wheel, 115-volt auxiliary power outlet and heated front seats

## AVAILABLE (continued)

**TRAILER TOW GROUP IV:** Heavy-duty engine cooling, Class IV hitch receiver, 4- and 7-pin wiring harness, rear load-leveling suspension, full-size spare tire (packaged with Quadra-Lift® Air Suspension) and 180-amp alternator

**MOPAR INTERIOR BRIGHT ACCENTS GROUP:** Mopar Front and Rear Door Sill Guards and Mopar Bright Pedal Kit

**MOPAR EXTERIOR BRIGHT ACCENTS GROUP:** Mopar Chrome Exhaust Tip and Chrome Mirror Covers

**PROTECH II:** Forward Collision Warning with Active Braking,<sup>17</sup> LaneSense® Lane Departure Warning with Lane Keep Assist,<sup>18</sup> Auto High-Beam Headlamp Control and Advanced Brake Assist

## INTERIORS

- 1) Sedoso/Lenox Cloth — Black (standard)
- 2) Sedoso/Lenox Cloth — Black/Light Frost Beige (standard)
- 3) Rose Grain appliqué — Black (standard)

## WHEEL

- 1) 18-inch Fine Silver aluminum (standard)



# SPECIFICATIONS

## EXTERIOR DIMENSIONS (inches unless noted otherwise)

Wheelbase	114.7
Overall Length	189.8
Overall Width (at mirrors)	84.8
Track (front / rear)	63.9 / 64.1
Height (at roof rail)	69.3
Ground Clearance	8.6
Approach Angle (deg)	26.2
Breakover Angle (deg)	19.0
Departure Angle (deg)	24.0
Water Fording Depth <sup>27</sup>	20.0

## INTERIOR DIMENSIONS

(inches unless noted otherwise, front / rear)

Seating Capacity	2 / 3 adults
Head Room	39.9 / 39.2
Leg Room	40.3 / 38.6
Shoulder Room	58.7 / 58
Hip Room	57.0 / 56.2
Rear Cargo Volume Behind 2nd Row (cu ft): rear seat up	36.3
rear seat folded	68.3

## CAPACITIES / WEIGHTS (lb unless noted otherwise)

Fuel Tank (gal)	24.6
Base Curb Weight	
(2WD / 4WD )	4,513 / 4,625
Payload Capacity, max / min	
(with all occupants and cargo)	1,410 / 1,180
Gross Vehicle Weight Rating (GVWR; 2WD / 4WD)	
3.6L Pentastar® V6 Engine	6,500 / 6,500

**BRAKE SYSTEM** — Power, single-rate, tandem diaphragm vacuuming and Antilock Brake System

Front: 3.6L V6	13.8 x 1.3 disc
Rear: 3.6L V6	13.0 x 0.87 vented disc

**VARIABLE VALVE TIMING** — Increases engine breathing by varying the degree the valves open and close in conjunction with the piston position, resulting in better performance, more efficient operation, and increased torque for towing and hauling

**TRANSMISSION** — Driver-interactive manual control and electronically modulated torque converter clutch with Eco Mode (standard)

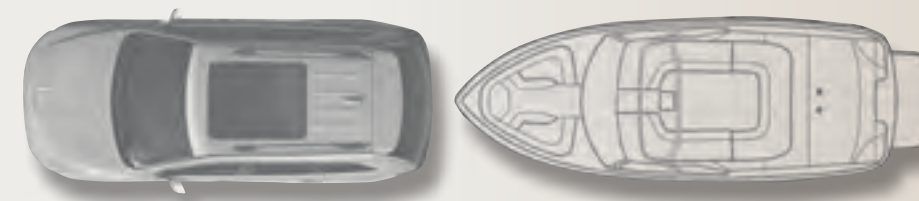
**SUSPENSION** — Front: short- and long-arm (SLA) independent, coil springs, gas-charged, twin-tube coil-over shock absorbers, steel upper and aluminum lower control arms (“A” arms), aluminum knuckle and hollow stabilizer bar. Rear: Multilink rear suspension, coil spring, twin tube shocks (including load leveling for towing), aluminum lower control arm, independent upper links (tension and camber), plus a separate toe link and hollow stabilizer bar

**STEERING** — Electric rack and pinion

Overall Ratio	17.9:1 (V6 4x2)
Turns, Lock-to-Lock	3.4 (V6 4x2)
Turning Diameter (ft: curb-to-curb)	37.1

**BODY DESIGN** — Uniframe construction: body panels and frame members welded and bonded into a single unit

**ELECTRONIC STABILITY CONTROL<sup>19</sup>** — 4-channel, 4-wheel antilock with active wheel-speed, vehicle-speed, steering wheel-angle, yaw-rate and lateral-acceleration sensors, vehicle stability management with 2-stage activation switch, All-Speed Traction Control, Brake Assist, Electronic Roll Mitigation and Electronic Brake-Force Distribution



## TOWING DATA

(lb, 2WD / 4WD)

Maximum Trailer Weight Rating when equipped with available Trailer Tow Group IV

3.6L Pentastar V6 Engine 6,200 / 6,200

RESTRICTIONS: Trailer frontal area limitation of 64 sq ft; maximum trailer length of 30 ft (Class IV); Trailer Sway Control<sup>20</sup> and low-profile mirrors are recommended. This chart is meant to serve as a quick reference guide on how to properly equip your Grand Cherokee WK for towing. For specific details, discuss your plans with your Jeep® Brand dealer, who will help select the right equipment to meet your specifications.

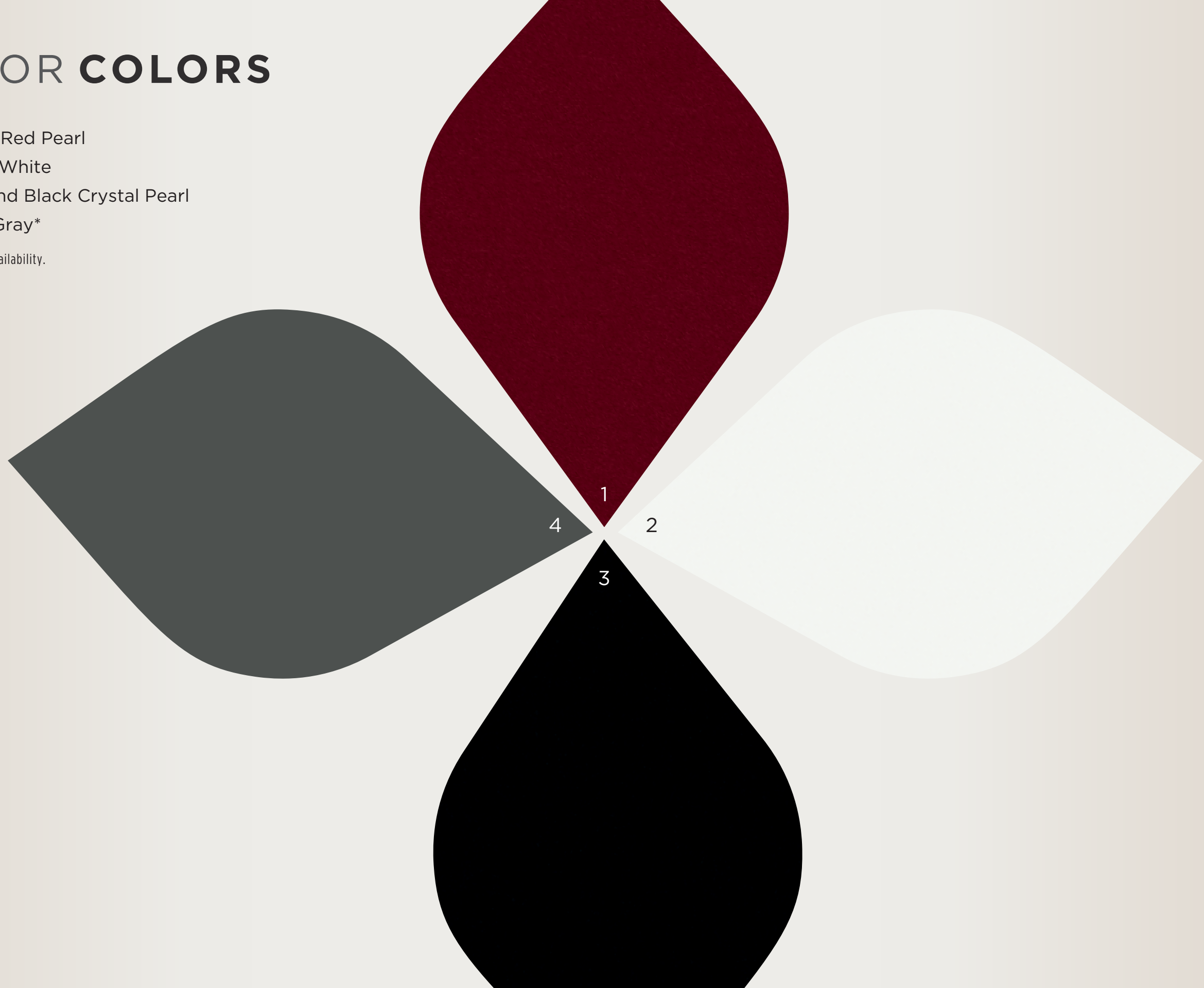
## POWERTRAINS

Engine	3.6L Pentastar V6 with Variable Valve Timing (VVT)
Displacement (cu in)	220
Horsepower (DIN @ rpm)	293 (single exhaust) 295 (dual exhaust)
Torque (SAE net lb-ft @ rpm)	260
Axle Ratio	3.45:1
Fuel Injection System	Sequential, multipoint, electronic, returnless

# EXTERIOR COLORS

- 1) Velvet Red Pearl
- 2) Bright White
- 3) Diamond Black Crystal Pearl
- 4) Sting-Gray\*

\* Limited availability.





## AUTHENTIC JEEP® BRAND VEHICLE ACCESSORIES

When it comes to Jeep® Grand Cherokee WK, not all parts and accessories are created equal. As the official service, parts and customer care provider for the Jeep® Brand, only Mopar® Parts and Accessories can ensure the proper fit, finish and functionality. That's because they're original equipment, engineered by the same people who designed your vehicle, which means you can personalize your ride with complete confidence.

Mopar is also more than parts and accessories. We're here to help you properly maintain and care for your vehicle. Our certified technicians are trained to know your vehicle best, and our Mopar Express Lane service departments are set up to get you in, out and back on the road. From parts and accessories to expert service and more, always be sure to choose Mopar. Learn more at [mopar.com](http://mopar.com)

Vehicle above shown with Authentic Jeep® Brand Vehicle Accessories by Mopar®, including Chrome Mirror Covers, Chrome Tubular Side Steps and 20-inch Chrome Wheels



Bright Pedal Kit



Roof Rack Crossbars  
Properly secure all cargo.



Rock Rails



All-Weather Floor Mats



## EXCLUSIVE BENEFITS FOR EVERY JEEP® GRAND CHEROKEE WK OWNER

All 2022 Jeep® Grand Cherokee WK vehicles are automatically enrolled in the Jeep Wave® Customer Care Program. It's a program designed to provide Jeep® Brand vehicle owners with dedicated 24/7 owner support and a special package of benefits designed to enhance their ownership experience and thank them for their patronage. Visit [JEEP.COM/WAVE](https://www.jeep.com/wave) for more details.



NO-ADDITIONAL-CHARGE,  
WORRY-FREE MAINTENANCE



CONFIDENCE WITH VEHICLE PROTECTION



DEDICATED 24/7 OWNER SUPPORT



VIP ACCESS TO JEEP® BRAND EVENTS



NO-CHARGE, SAME-DAY RENTAL COVERAGE



# OWNER SUPPORT

THE JEEP® BRAND IS PROUD TO OFFER  
SOME OF THE BEST OWNERSHIP SUPPORT  
PROGRAMS AVAILABLE ANYWHERE.

**5 YEAR / 60,000 MILE POWERTRAIN LIMITED WARRANTY** **WARRANTIES** Jeep® Brand vehicles are covered by a 3-Year / 36,000-Mile Basic Limited Warranty<sup>28</sup> (excludes normal maintenance and wear items), as well as a 5-Year / 60,000-Mile Powertrain Limited Warranty<sup>29</sup> that is fully transferable. See your dealer for complete details and a copy of the 5-Year / 60,000-Mile Powertrain Limited Warranty<sup>29</sup>.



VEHICLE PROTECTION

**MOPAR® VEHICLE PROTECTION PLANS**

A variety of Protection Plans accepted at all FCA US LLC dealerships have been designed to meet the needs of your unique lifestyle on the road. We stand behind every extended protection plan with certified, factory-trained technicians and the use of original equipment parts. Ask for a Mopar® Vehicle Protection Plan at your dealership, call (800) 442-2666 or visit [mopar.com](http://mopar.com)



**DRIVEABILITY** | FCA

**DRIVEABILITY PROGRAM** The FCA US LLC DriveAbility Program provides aftermarket reimbursement incentives on adaptive vehicle upfit equipment to help provide safe and reliable vehicle modifications, enhancing accessibility for all people. For more information, call (800) 255-9877 or visit [fcausdriveability.com](http://fcausdriveability.com)

**MOPAR® OWNER'S SITE & COMPANION APP** Get all of the resources you need to make owning your Jeep® Brand vehicle the best experience possible. Schedule service directly with your preferred dealer, create a custom online dashboard tailored to you and your vehicle, and access personalized resources, including your Owner's Manual, Vehicle Health Report, special offers and more — anytime, anywhere. Register your vehicle at [mopar.com](http://mopar.com) or download the Mopar® Owner's Companion App today.



**JEEP® DRIVEPLUS™ MASTERCARD®**

Apply today for a Jeep® DrivePlus™ Mastercard® and, upon approval, start earning 5% cash back on Jeep dealership purchases, 2% cash back on gas and travel purchases, and 1% cash back on purchases everywhere else.<sup>30</sup> Redeem your rewards toward your next service or your next Jeep purchase. Go to [drivepluscard.com](http://drivepluscard.com) or visit a participating dealer to learn more.

# EXPANDED HORIZONS

DELVE DEEPER INTO THE JEEP® LIFE WITH AN EXPANSIVE ARRAY OF SOCIAL MEDIA, SHOPPING, OWNER RESOURCES AND ONE-OF-A-KIND EVENTS. START YOUR ADVENTURE TODAY AT [JEEP.COM](http://JEEP.COM)



**SOCIAL ADVENTURES** Expand your horizons to include authentic and active Jeep® Brand online communities. Post stories, share photos, watch videos and get the latest news from Jeep Brand gearheads and engineers on Facebook, Instagram, Twitter and YouTube. Tune in and get out into the virtual world, where thrilling adventures are happening every single day.

---

[facebook.com/Jeep](https://facebook.com/Jeep)

---

[instagram.com/Jeepofficial](https://instagram.com/Jeepofficial)

---

[twitter.com/Jeep](https://twitter.com/Jeep)

---

[youtube.com/TheJeepChannel](https://youtube.com/TheJeepChannel)

---



**JEEP® BADGE OF HONOR** Experience an online community that invites off-road fans to sign up, download the app and check in to legendary off-road trails across the U.S. — earmarked by the Jeep® Badge of Honor. Members can discover special trails and maps, earn Trail Points and ranks within the community, share photos and learn more about Jeep Trail Ratings. Connect with fellow Jeep® Brand vehicle owners and like-minded friends at [jeep.com/badge-of-honor](http://jeep.com/badge-of-honor)



**JEEP® JAMBOREES** For those with an adventurous spirit, join us on the trail. Head for parts unknown or return to fun, familiar places. Jeep® Jamboree USA offers off-road adventure weekends that bring together the outdoors, down-to-earth people and their Jeep® Brand 4x4 vehicles. Explore America's backcountry at [jeepjamboreeusa.com](http://jeepjamboreeusa.com)



**JEEP® GEAR** Uncover an extensive line of fun, developed exclusively for Jeep® Brand enthusiasts. From authentic wearables to unique gifts, all items are as rugged and durable as your Jeep Brand vehicle. Express your true nature. Learn more at [jeep.com/gear](http://jeep.com/gear)



available at  
**amazon**

**JEEP® AMAZON STORE** Browse an ever-changing collection of unique Jeep® Brand merchandise with your favorite shopping experience at Amazon.com, including items eligible for Amazon Prime. Start exploring at [amazon.com/jeepstore](http://amazon.com/jeepstore)





# ADVENTURE AWAITS

BUILD YOURS >

(1) Always check visually for vehicles prior to changing lanes. (2) Always check entire surroundings visually before proceeding. (3) Always look before proceeding. An electronic drive aid is not a substitute for conscientious driving. Always be aware of your surroundings. (4) Based on manufacturer's estimates with a 3.6L engine and 4x2 configuration. Actual mileage may vary. (5) SiriusXM Audio, SiriusXM Traffic and SiriusXM Travel Link require subscriptions, sold separately or as a package, by SiriusXM Radio Inc. **If you decide to continue service after your trial period included with the new vehicle purchase, the subscription plan you choose will automatically renew thereafter and you will be charged according to your chosen payment method at then-current rates.** Trial service is not transferable. Fees and taxes apply. Please see the Customer Agreement at [www.siriusxm.com](http://www.siriusxm.com) for complete terms and how to cancel, which includes calling SiriusXM at 1-866-539-7474. All fees and programming are subject to change. Not all vehicles or devices are capable of receiving all services offered by SiriusXM. Data displays and individual product availability vary by vehicle hardware. (6) Requires compatible iPhone. See dealer for phone compatibility. Data plan rates apply. Vehicle user interface is a product of Apple. Apple CarPlay is a trademark of Apple Inc. iPhone is a trademark of Apple Inc., registered in the US and other countries. Apple terms of use and privacy statements apply. (7) To use Android Auto on your car display, you'll need an Android phone running Android 6 or higher, an active data plan and the Android Auto App. Google, Android, Android Auto, YouTube Music and other related marks are trademarks of Google LLC. (8) Requires an iPhone with Siri. Certain features are not available while the vehicle is in motion. iPhone must be within active cellular range. Customer's existing iPhone data rates apply to Internet-supported features. (9) Three-month / 1GB trial included with the purchase or lease of a new vehicle. Upon expiration of the trial period, purchase of a subscription is required. Wi-Fi Hotspot available through third-party subscription. Requires Internet-enabled mobile device. See dealer for details. This feature is not intended for use by the driver while the vehicle is in motion. Always drive carefully. (10) All SiriusXM Guardian equipped vehicles come with a 12-month complimentary trial effective on the date of purchase or lease of a new vehicle. Enrollment in the trial is required to receive service. Upon expiration of the trial period, purchase of a subscription is required to continue SiriusXM Guardian. SiriusXM Guardian is available only on equipped vehicles purchased within the United States and Puerto Rico. Services can only be used where cellular coverage is available. See Uconnect and SiriusXM Guardian Terms of Service for complete service limitations. (11) In the event of a medical or other emergency, press the SOS button to be connected to a Customer Care agent who can direct emergency assistance to your vehicle's GPS location. (12) Remote Vehicle Start not available on all vehicles. You are responsible for using remote features in accordance with any laws, rules or ordinances in effect in your vehicle's location. You must have an active subscription to SiriusXM Guardian in order to use remote services. See Terms of Service for service limitations. (13) You are responsible for using remote features in accordance with any laws, rules or ordinances in effect in your vehicle's location. You must have an active subscription to SiriusXM Guardian in order to use remote services. See Terms of Service for service limitations. (14) Compatible with properly equipped Uconnect systems on eligible vehicles. Requires registration of vehicle to SiriusXM Guardian connected services and fulfillment of minimum subscription requirements. Amazon, Alexa, and all related logos and marks are trademarks of Amazon.com, Inc. or its affiliates. (15) Not all vehicles or devices are capable of receiving all services offered by SiriusXM. Data displays and individual product availability vary by vehicle hardware. Current information and features may not be available in all locations, or on all receivers. Weather Forecast, Current Conditions may not be available in all locations. (16) This system is a driver convenience system, not a substitute for active driver involvement. The driver must remain aware of traffic conditions and be prepared to use the brakes to avoid collisions. (17) This system is an alert system for the front of the vehicle. It is not a substitute for active driver involvement. The driver must remain aware of traffic conditions and be prepared to use the brakes to avoid collisions. (18) This system is a driver convenience system, not a substitute for active driver involvement. The driver must remain aware of traffic conditions and maintain control of the vehicle. (19) Always drive carefully, consistent with conditions. Always wear your seat belt and obey traffic laws. (20) Always drive carefully, consistent with conditions. (21) Voice Text Reply feature requires a compatible mobile device that supports text messaging and Bluetooth. Visit [www.UconnectPhone.com](http://www.UconnectPhone.com) for system and device compatibility. (22) Always sit properly in designated seating positions with seat belts securely fastened at all times. (23) Check state and local laws regarding the use of remote start systems. (24) Not compatible with all garage doors. (25) Roadside Assistance Call connects you with an agent who will provide Roadside Assistance Service. Vehicle must be within the United States, Puerto Rico or Canada and have network coverage. Additional roadside assistance charges may apply. Check warranty for details. (26) Vehicle must be locked and system activated for alarm to sound. (27) Do not attempt water fording unless depth is known and consistent with the vehicle's water fording rating in the Owner's Manual. Traversing water can cause damage that may not be covered by the new vehicle warranty. Always off-road responsibly in approved areas. (28) Visit [Mopar.com](http://Mopar.com) for complete details and a copy of the Basic Limited Warranty. (29) Visit [Mopar.com](http://Mopar.com) for complete details and a copy of the Powertrain Limited Warranty. (30) See the Reward Terms and Conditions in the Summary of Credit Terms provided at time of application for details, including earning, redemption, expiration or forfeiture. Percentage back is earned as points.

©2021 FCA US LLC. All Rights Reserved. Jeep, Mopar, the Jeep grille, Badge of Honor, Grand Cherokee, Jeep Wave, the Jeep Wave Equipped design, LaneSense, Laredo, Mopar Vehicle Protection, ParkSense, ParkView, Pentastar, Quadra-Lift, Quadra-Trac I, Quadra-Trac II, Sentry Key, Selec-Terrain and Uconnect are registered trademarks and DriveAbility and Keyless Enter 'n Go are trademarks of FCA US LLC.

Airstream is a registered trademark of Airstream Inc. All rights reserved. Alpine and the Alpine logo are registered trademarks of Alpine Electronics, Inc. Amazon, Alexa, and all related logos and marks are trademarks of Amazon.com, Inc. or its affiliates. Apple, Apple CarPlay, iPhone and Siri are registered trademarks of Apple Inc. Bluetooth is a registered trademark of Bluetooth SIG, Inc. Facebook and logo are registered trademarks of Facebook, Inc. Goodyear is a registered trademark of The Goodyear Tire & Rubber Company. All rights reserved. Google, Android, YouTube, Android Auto and other marks are trademarks of Google LLC. Instagram is a registered trademark of Instagram, Inc. Cards are issued by First National Bank of Omaha (FNB), pursuant to a license from Mastercard International Incorporated. Mastercard is a registered trademark, and the circles design is a trademark of Mastercard International Incorporated. Michelin is a registered trademark of Michelin North America, Inc. Sirius, XM, SiriusXM, SiriusXM Guardian, and all related marks and logos are registered trademarks of SiriusXM Radio Inc. The Twitter name, logo, Twitter T, Tweet and Twitter bird are trademarks of Twitter, Inc. in the United States and other countries.

This document is a publication of FCA US LLC. All product illustrations and specifications are based upon current competitive information at the time of publication approval. FCA US LLC reserves the right to make changes from time to time, without notice or obligation, in prices, specifications, colors and materials, and to change or discontinue models which are considered necessary to the purpose of product improvement or for reasons of design and / or marketing.

# Jeep®

THERE'S ONLY ONE

JEEP.COM

Jeep is a registered trademark of FCA US LLC.

(800) 925-JEEP

74-383-2210